



Sandra Laveaux, MD, MPH



Shari Snow, MD

Advances in the Management of Benign Gynecologic Conditions

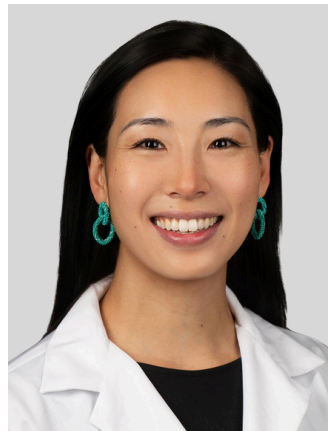
**Saturday, April 18, 9 a.m. - 2 p.m. CT
Center for Care and Discovery
5700 S. Maryland Ave., Room 07850**



Laura A. Douglass, MD



Farah Alvi, MD



Hannah Ryles, MD



Insiyyah Patanwala, MD

AFTER THIS ACTIVITY, PARTICIPANTS WILL BE ABLE TO:

- Improve their ability to safely perform or assist in minimally invasive hysterectomy and myomectomy for large fibroid uteri and advanced endometriosis.
- Incorporate fertility goals, ovarian reserve, symptom burden, and prior surgical history into shared decision-making for the management of endometriomas.
- Apply imaging-informed insights to medical management decisions in endometriosis, including selection and tailoring of hormonal therapies, use of NSAIDs and adjunctive treatments, and referral for multidisciplinary or advanced care.
- Improve patient counseling, care coordination, and clinical outcomes in complex endometriosis and fibroid cases through an integrated, imaging-guided management approach.
- Strengthen shared decision-making with patients who have simple and complex gynecologic pathology by aligning treatment recommendations with symptoms, reproductive goals, and available therapies.

Limited spots available. This activity is approved for *AMA PRA Category 1 credit™*