

Featuring Live Cases & Hands-on Session

21st Annual Endoscopic Ultrasonography Live 2016

CENTER FOR ENDOSCOPIC RESEARCH & THERAPEUTICS (CERT)

November 4-6, 2016



A Collaboration between The University of Chicago Medicine and Massachusetts General Hospital

THE UNIVERSITY OF CHICAGO MEDICINE
CENTER FOR CARE AND DISCOVERY
5700 South Maryland, 7th Floor
Chicago, IL 60637

COURSE DIRECTORS:

Irving Waxman, MD, FASGE

William R. Brugge, MD

Uzma Siddiqui, MD, FASGE

Target Audience:

Gastroenterologists, Endoscopists,
Endosonographers, Surgeons,
Oncologist, nurses and GI fellows.

This course is endorsed by the American
Society for Gastrointestinal Endoscopy



Course highlights include two full days of live EUS procedures, interactive debates, video quizzes, and lectures. There will also be an optional half-day hands-on lab where the expert faculty will teach important EUS skills and techniques.

Please Join Us in Chicago for the EUS Event of the Year!

Register online at: cme.uchicago.edu/EUS2016



THE UNIVERSITY OF
CHICAGO
MEDICINE &
BIOLOGICAL
SCIENCES

CONFERENCE FACULTY

INTERNATIONAL FACULTY

Vinay Dhir, MD,DNB,FASGE

Director, Baldota Institute of Digestive Sciences, Global Hospital, Parel, Mumbai, India

Alberto Larghi, MD, PhD

Director of the Endoscopic Ultrasound program
Digestive Endoscopy Unit
Catholic University
Rome, Italy

Luis C. Sabbagh, MD, FASGE

Chief of the department of Gastroenterology Reina Sofia and Colombia University Clinics
Director of postgraduate program on Gastroenterology Sanitas University Foundation
Director of the World Gastroenterology Organization (WGO) Bogota Training Center
President of the Pan-American Gastroenterology Organization (OPGE)
Past President of the Colombian Association for Gastroenterology
Past President of the Colombian Association for Gastrointestinal Endoscopy

Julio Iglesias García, MD, PhD

Head of Endoscopy Unit
Department of Gastroenterology and Hepatology
University Hospital of Santiago de Compostela, Spain

INVITED FACULTY

Vanessa Shami, MD

Associate Professor of Internal Medicine
Director of Endosonography
University of Virginia Digestive Health System
Charlottesville, VA

Brenna Casey, MD, FASGE

Interventional Gastroenterology
Director of Endoscopic Training
Massachusetts General Hospital
Harvard Medical School
Boston, MA

Douglas G. Adler, MD, FACC, AGAF, FASGE

Professor of Medicine
Director of Therapeutic Endoscopy
Director, GI Fellowship Program
Gastroenterology and Hepatology
University of Utah School of Medicine
Huntsman Cancer Center
Salt Lake City, Utah

Amrita Sethi, MD, FASGE

Assistant Professor of Medicine
Director of Pancreaticobiliary Endoscopy Services
New York-Presbyterian University Hospital of Columbia and Cornell
New York, NY

Mouen Khashab, MD

Associate Professor of Medicine
Director of Therapeutic Endoscopy
Johns Hopkins Hospital
Sheikh Zayed Bldg
Division of Gastroenterology and Hepatology
Baltimore, MD

Kai Matthes, MD, PhD

Harvard Medical School
Founder & Owner, Endosim LLCMD
Boston, MA

UNIVERSITY OF CHICAGO FACULTY

Christopher Chapman, MD

Assistant Professor of Medicine
Director of Bariatric Endoscopy

Kyle Hogarth, MD

Associate Professor of Medicine
Director, Bronchoscopy and Minimally Invasive Diagnostics
Co-Director, Upper Aerodigestive Cancer Risk Clinic
Medical Director, Pulmonary Rehabilitation Program

John F. Renz, MD, PhD

Professor of Surgery
Liver Transplantation and Hepatobiliary Surgery

Mark Ferguson, MD

Professor of Surgery
Head, Thoracic Surgery Service
Director, Residency Program in Cardiothoracic Surgery
Department of Surgery

Ward Reeves, MD

Clinical Associate of Pathology

Mitchell C. Posner, MD

Thomas D. Jones Professor of Surgery
Chief, Section of General Surgery
Chief, Surgical Oncology
Medical Director, Clinical Cancer Programs
Department of Surgery

COURSE DIRECTORS

Irving Waxman, MD, FASGE

Sara and Harold Lincoln Thompson
Professor of Medicine, Surgery and
Director of the Center for Endoscopic
Research and Therapeutics (CERT)

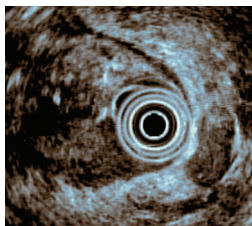
William R. Brugge, MD

Director, Pancreas Biliary Center
Mass. General Hospital
Professor of Medicine
Harvard Medical School

Uzma D. Siddiqui, MD, FASGE

Associate Professor of Medicine
Associate Director of the Center
for Endoscopic Research and
Therapeutics (CERT)
Director of Endoscopic Ultrasound
(EUS) and Advanced Endoscopy
Training

CONFERENCE DESCRIPTION



Endoscopic ultrasound (EUS) has become a widespread endoscopic technique in the diagnosis, staging and tissue acquisition of gastrointestinal malignancies. High resolution imaging of the pancreas has also been a major strength of EUS. This course will offer gastroenterologists, endoscopist, surgeons, and nurses an opportunity to review the indications and techniques used for EUS, fine needle aspiration (FNA), and injection therapy. A series of lectures, live case demonstrations, and hands-on tutorials will be conducted by an expert international EUS faculty.

LEARNING OBJECTIVES

At the conclusion of this educational activity, participants will be able to:

- *Discuss the most recent advances in EUS technology and equipment*
- *Describe the role of EUS in the diagnosis, staging, and management of gastrointestinal malignancies*
- *Identify the applications for the radial, sector-scanning echoendoscope and the curved linear-array echoendoscope, including EUS-guided fine needle aspiration and EUS probes*
- *Explain how EUS is utilized to evaluate pancreatic diseases including malignancy, cystic neoplasms, and chronic pancreatitis*

Please join us for what promises to be an informative and thought-provoking conference!

TARGET AUDIENCE

This activity has been planned for Gastroenterologists, Endoscopists, Endosonographers, Surgeons, Oncologist, nurses and GI fellows committed to the advancement of endoscopy.

ACCREDITATION AND CREDIT DESIGNATION

The University of Chicago Pritzker School of Medicine is accredited by the Accreditation Council for Continuing Medical Education to provide continuing medical education for physicians.

The University of Chicago Pritzker School of Medicine designates this live activity for a maximum of 20.5 *AMA PRA Category 1 Credits™*. Physicians should claim only the credit commensurate with the extent of their participation in the activity.

Nurses and other healthcare professionals will receive a Certificate of Participation. For information on the applicability and acceptance of Certificates of Participation for educational activities certified for *AMA PRA Category 1 Credit™* from organizations accredited by the ACCME, please consult your professional licensing board.

EDUCATIONAL GRANTS/COMMERCIAL SUPPORT

A complete listing of commercial support received will be provided in the conference materials.

ADDITIONAL INFORMATION

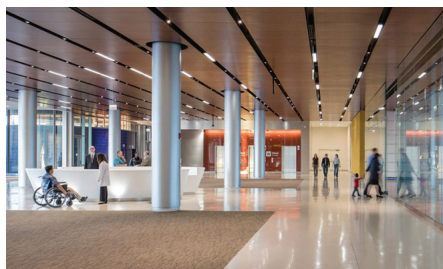
Address all correspondence to the University of Chicago Center for CME at cme@bsd.uchicago.edu or Breonda Bradie, Center for Endoscopic Research and Therapeutics Program Coordinator, at bbradie@bsd.uchicago.edu.

DISCLOSURE DECLARATIONS

As a provider accredited by the ACCME, The University of Chicago Pritzker School of Medicine asks everyone who is in a position to control the content of an education activity to disclose all relevant financial relationships with any commercial interest. This includes any entity producing, marketing, re-selling, or distributing health care goods or services consumed by or used on patients. The ACCME defines "relevant financial relationships" as financial relationships in any amount occurring within the past 12 months, including financial relationships of a spouse or life partner that could create a conflict of interest. Mechanisms are in place to identify and resolve any potential conflict of interest prior to the start of the activity.

Additionally, The University of Chicago Pritzker School of Medicine asks authors to identify investigational products or off-label uses of products regulated by the US Food and Drug Administration at first mention and where appropriate in the content.

LOCATION AND ACCOMMODATIONS



The conference will take place at The University of Chicago Medicine Center for Care and Discovery. Complimentary valet parking will be provided.

University of Chicago Medicine Center for Care and Discovery

5700 South Maryland, 7th Floor
Chicago, IL 60637

<http://careanddiscovery.uchospitals.edu/>

HOTEL/ACCOMMODATIONS/TRANSPORTATION

We have reserved a block of rooms at the Hotel Chicago Downtown, Autograph Collection, where contemporary elegance blends seamlessly with a classic approach to luxury service. **We will provide shuttle bus service to/from hotel and conference location.**

Hotel Chicago Downtown, Autograph Collection

333 North Dearborn Street (Driveway entrance on 350 N. State Street)
Chicago IL 60654

Phone: 312-245-0333 or via our Passkey: tinyurl.com/EUS-LIVE-2016

Please make your reservations directly with the Hotel Chicago Downtown, Autograph Collection, and state that you are part of the University of Chicago group to receive this rate. We urge you to make your reservation early as rooms will sell out in Chicago.

Room Rates: \$229 Single or Double Rate

Check-in: 3:00 pm

Check-out: 12:00 pm

Rates do not include applicable state and local taxes, currently 16.4%. **The “cut-off date” for reserving rooms is 5:00 pm (central time) on October 7, 2016.** Reservations received after the cut-off date will be subject to prevailing rates and availability.

Benefits of staying at Hotel Chicago include:

50% Discount on all overnight Valet Parking

Complimentary access to Crossroads at the House of Blues nightly blues show

Complimentary internet

Complimentary use of 24 hour business and fitness center

Signing Privileges to 4 restaurants: Tortoise Club, Smith & Wollensky, House of Blues, Harry Caray's Italian Steakhouse

For directions and additional information about Hotel Chicago Downtown, Autograph Collection, please visit: www.marriott.com/hotels/travel/chi-xh-hotel-chicago-downtown-autograph-collection/?app=resvlink

Chicago is truly a city with something for everyone! To help plan your stay in Chicago visit: www.choosechicago.com

The University of Chicago reserves the right to cancel or postpone this conference due to unforeseen circumstances. In the unlikely event this activity must be cancelled or postponed, the registration fee will be refunded. However, The University of Chicago is not responsible for any related costs, charges, or expenses to participants, including fees assessed by airline/travel/lodging agencies.



CONFERENCE AGENDA

Friday, November 4

6:15 am	BUS DEPARTS HOTEL
7:00 am	REGISTRATION AND CONTINENTAL BREAKFAST
7:25	Welcome <i>Irving Waxman, MD, William Brugge, MD, and Uzma Siddiqui, MD</i>
	Session I: EUS Basics <i>Moderators: Julio Iglesias-Garcia, MD, William Brugge, MD, Vinay Dhir, MD</i>
7:30	Overview of EUS in 2016 <i>Irving Waxman, MD</i>
7:40	What's New in EUS Equipment? <i>Brenna Casey, MD</i>
8:00	Radial EUS Basics <i>Luis Carlos Sabbagh, MD</i>
8:20	Linear EUS Basics <i>Douglas Adler, MD</i>
8:40	EUS Enhanced Imaging <i>Julio Iglesias Garcia, MD</i>
9:00–10:00	LIVE CASES
10:15	Break
	Session II: Pancreatic Neoplasms <i>Moderators: Alberto Larghi, MD, Brenna Casey, MD, Mitchell Posner, MD, Luis Sabbagh, MD</i>
10:30	Update on EUS and Pancreatic Cancer <i>Vinay Dhir, MD</i>
10:50	Pancreatic Cystic Neoplasms: Survey, Resect, Or Leave Alone? <i>William Brugge, MD</i>
11:10	Pancreatic Cancer: Surgical Oncology Perspective <i>Mitch Posner, MD</i>
11:30–12:30 pm	LIVE CASES
12:30–1:30	LUNCH
	Session III: Esophageal Cancer <i>Moderators: Mouen Khashab MD, Douglas Adler, MD, Amrita Sethi, MD</i>
1:30	EUS for Esophageal Cancer Staging <i>Julio Iglesias Garcia, MD</i>
1:50	EBUS Basics for the Endoscopist <i>Kyle Hogarth, MD</i>
2:10	Esophageal Cancer: Thoracic Surgery Perspective <i>Mark Ferguson, MD</i>
2:30–3:30	LIVE CASES
3:30	Break
3:40	Maximizing your EUS Sample <i>Alberto Larghi, MD</i>
4:00	EUS VIDEO QUIZ <i>Brenna Casey, MD</i>
4:30	RECEPTION
5:30 pm	BUS DEPARTS MEDICAL CENTER

Saturday, November 5

7:00 am	BUS DEPARTS HOTEL
7:30	CONTINENTAL BREAKFAST
	Session IV: Pancreaticobiliary Drainage <i>Moderators: Alberto Larghi, MD, Mouen Khashab, MD, Vanessa Shami, MD, John Renz, MD</i>
8:00	EUS-guided Treatment of Pancreatic Collections <i>Amrita Sethi, MD</i>
8:20	EUS-guided Biliary and Gallbladder Drainage <i>Vinay Dhir, MD</i>

Program agenda and speaker selection subject to change

CONFERENCE AGENDA

8:40	EUS-guided Pancreatic Endotherapy <i>Mouen Khashab, MD</i>
9:00-10:00	LIVE CASES
10:00	Break
	Session V: Luminal <i>Moderators: Mouen Khashab, MD, Brenna Casey, MD, Julio Iglesias Garcia,MD</i>
10:10	EUS Workup of Subepithelial Lesions <i>Douglas Adler, MD</i>
10:30	Gastric Tumor Staging: Adenocarcinoma, MALT and More <i>Luis Carlos Sabbagh, MD</i>
10:50	Rectal Cancer Staging: EUS vs MRI <i>Vanessa Shami, MD</i>
11:10	Drainage of Peri-Rectal Collections <i>Amrita Sethi, MD</i>
11:30-1:00 pm	LIVE CASES
1:00-1:45	Lunch
	Session VI: Advanced Imaging and Chronic Pancreatitis <i>Moderators: Alberto Larghi, MD, Amrita Sethi, MD, Carlos Sabbagh, MD</i>
1:45	Chronic Pancreatitis: Figuring Out the Features <i>Christopher Chapman, MD</i>
2:05	Advanced Imaging of the Pancreas: Benign or Malignant? <i>Julio Iglesias Garcia, MD</i>
2:25	EUS-guided Confocal Endomicroscopy <i>Uzma Siddiqui, MD</i>
2:45-3:45	LIVE CASES
3:45	Break
	Session VII: Therapeutic EUS <i>Moderators: Vinay Dhir, MD, Brenna Casey, MD, Douglas Adler, MD</i>
3:55	Hemostasis: Coils, Glue, and More <i>Alberto Larghi, MD</i>
4:15	Anti-tumor Therapy: Is There a Role for EUS-guided Treatment? <i>William Brugge, MD</i>
4:35	EUS-guided Anastomosis: Gastrojejunostomy <i>Mouen Khashab, MD</i>
4:55	STATE OF THE ART LECTURE: The Future of EUS <i>Vinay Dhir, MD</i>
5:15	Closing Comments/Adjourn
5:30 pm	BUS DEPARTS MEDICAL CENTER

Sunday, November 6

7:00 am	BUS DEPARTS HOTEL
7:30	BREAKFAST
8:00	Best of DDW <i>Douglas Adler, MD</i>
8:30	Best of UEGW <i>Julio Iglesias Garcia, MD</i>
9:00	Hands-On Rotations <i>All Faculty</i>
11:00	EUS Questions and Cases LUNCH
12:00 pm	Hands-On Rotations <i>All Faculty</i>
2:00	ADJOURN
BSLC LABS:	Kai Matthes, MD <i>(Hands-on Coordinator)</i>


HANDS-ON WORKSHOP STATIONS	
STATION	LABEL
1	ESOPHAGEAL MASS STAGING AND FNA
2	GASTRIC SUBMUCOSAL MASS EVALUATION AND DIAGNOSIS: EUS-CORE BIOPSY AND ENDOSCOPIC MUCOSAL RESECTION
3	PANCREATIC CYST FNA
4	FNA OF SOLID LESIONS: PANCREATIC MASS, LIVER MASS, AND LYMPH NODE
5	FNA OF SOLID LESIONS: PANCREATIC MASS, LIVER MASS, AND LYMPH NODE
6	INJECTION THERAPY: CELIAC NEUROLYSIS AND EUS-GUIDED EMBOLIZATION
7	PANCREATIC PSEUDOCYST DRAINAGE: PLASTIC STENTS
8	PANCREATIC PSEUDOCYST DRAINAGE: AXIOS
9	FIDUCIAL MARKER PLACEMENT
10	EUS-GUIDED BILIARY ACCESS

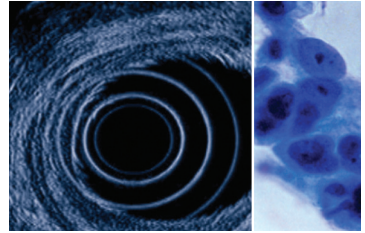
REGISTRATION

HOW TO REGISTER

 **ONLINE** cme.uchicago.edu/EUS2016 (credit card payment only)

To pay by check, you must mail your registration with payment to:

 **MAIL** The University of Chicago
Center for Endoscopic Research and Therapeutics
Attn: Breonda Bradie c/o EUS Live 2016
5700 S. Maryland Ave. MC 8043
Chicago, IL 60637



The registration fee includes conference materials, an electronic syllabus, continental breakfast, refreshment breaks, lunch, and welcome reception. **Optional Sunday, Nov 6th Hands-On Skills Assessment and Training Session is extra.** You may register online or via US mail. **While registration is open until the start of the meeting, we encourage early registration to enable us to provide the best possible service to participants.**

	On or Before Oct 7	After Oct 7
Physician (Friday & Saturday General Sessions)	\$750	\$825
Nurse/PA/Allied Health Professionals (Friday & Saturday General Sessions)	\$450	\$525
Resident/Fellow (fax letter of verification to 773-702-1736) (Friday & Saturday General Sessions)	\$350	\$425
Industry (Friday & Saturday General Sessions)	\$475	\$550
OPTIONAL Hands-On Session: Sunday, Nov 6, 2016 (SPACE IS LIMITED)	\$250	\$325

Payment Total \$ _____

PAYMENT

☐ Check enclosed (U.S. funds only), payable to **The University of Chicago (Tax ID#36-2177139)**

CONTACT INFORMATION

Name _____ Degree _____
Specialty _____
Organization _____
Mailing Address _____
City _____ State _____ Zip _____
Phone _____ Fax _____
Email _____

PLEASE CHECK ALL THAT APPLY

☐ You must check this box if you do not want your mailing address shared with conference participants and/or exhibitors (if applicable).

Do you plan to attend the Friday Welcome Reception? ☐ Yes ☐ No

Please tell us how you found out about this activity, check all that apply:

☐ Colleague ☐ Save the Date ☐ Brochure ☐ Internet ☐ Email

☐ Journal Ad ☐ Previous Attendance ☐ Other _____

CANCELLATION POLICY

If you cancel your participation in this conference, your registration fee, less a \$100.00 administrative fee, will be refunded when written notification is received by October 7, 2016. **No refunds will be issued after October 7, 2016.**

ACCESSIBILITY

The University of Chicago is committed to providing equal access appropriate to need and circumstance and complies fully with the legal requirements of the Americans with Disabilities Act. If you are in need of special accommodation, please contact our office at 773-702-1056 or via email at cme@bsd.uchicago.edu.



THE UNIVERSITY OF
CHICAGO
MEDICINE &
BIOLOGICAL
SCIENCES

The University of Chicago
Center for Continuing Medical Education
5700 S. Maryland Ave. MC 1137, Chicago IL 60637

NOVEMBER 4-6, 2016

21ST ANNUAL ENDOSCOPIC ULTRASONOGRAPHY LIVE 2016

**FEATURING LIVE CASES
& HANDS-ON SESSION**

**Center for Endoscopic Research
& Therapeutics (CERT)**

THE UNIVERSITY OF CHICAGO MEDICINE
CENTER FOR CARE AND DISCOVERY
5700 South Maryland, 7th Floor
Chicago, IL 60637



AND SAVE THE DATE
For our 5th Annual
Endoscopy Course
APRIL 7-8, 2017

PLEASE POST