

COURSE DIRECTORS

Fernando Goldenberg, MD

*Co-Director of Neuroscience ICU
Clinical Associate of Neurology
The University of Chicago Medicine*

Morris Kharasch, MD

*Chief of Emergency Medicine
NorthShore University HealthSystem*

CLINICAL FACULTY

Andrew Agos, MD, FACS

*Medical Director of Trauma
Evanston Hospital*

Thomas P. Bleck, MD, MCCM, FNCS

*Associate Chief Medical Officer for Critical Care
Rush University Medical Center*

Rima Dafer, MD

*Director, Stroke Program
NorthShore University HealthSystem*

Christopher L. Kramer, MD

*Assistant Professor of Neurology
University of Chicago*

George Lopez, MD, PhD

*Associate Medical Director, Neuroscience ICU
Rush University Medical Center*

Deepak Nair, MD

*Director, Neuroscience ICU
OSF Saint Francis Medical Center*

Mark Rubin, MD

*Assistant Professor of Neurology
NorthShore University HealthSystem*

Gene Y. Sung, MD, MPH

*Director, Neurocritical Care and Stroke Division
University of Southern California*

Leslie S. Zun, MD, MBA

*Chair, Department of Emergency Medicine
Mount Sinai Hospital*

JANUARY 12, 2016

7:30 A.M. to 3 P.M.

REGISTRATION

To register visit <http://register.giftofhope.org/workshop>

The registration fee is \$900. Gift of Hope Learning Institute will sponsor the registration fee for the first 25 physicians who register.

This activity has been approved for *AMA PRA Category 1 Credit™*

WHERE

NorthShore University HealthSystem

Grainger Center for Simulation & Innovation at:

Evanston Hospital

2650 Ridge Ave.

Evanston, IL 60201

PARKING

Parking fees for Evanston Hospital

Six to eight hours \$8.50

More than eight hours \$11.50

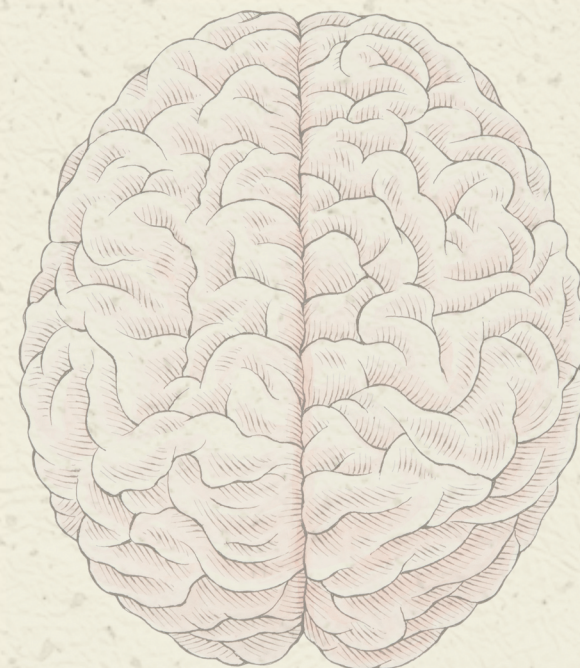


THE UNIVERSITY OF
CHICAGO
MEDICINE

BRAIN DEATH SIMULATION WORKSHOP

— IN PARTNERSHIP WITH —
GRAINGER CENTER FOR SIMULATION

**NorthShore**
University HealthSystem



— SPONSORED BY —
THE LEARNING INSTITUTE

**gift of hope™**
Organ & Tissue Donor Network

WORKSHOP

Brain death determination and management requires a unique blend of up-to-date knowledge, technical skills, and interpersonal skills to assure accurate diagnosis and optimize family coping. The goal of this workshop is to provide attendees with a comprehensive experience that will enhance confidence with the most contemporary approach to brain death determination and management.

LEARNING OBJECTIVES

After attending this educational activity, participants will be able to:

- Accurately diagnose brain death and readily recognize brain death mimics
- Properly employ ancillary testing when necessary
- Perform an apnea test properly
- Interface with families and discuss brain death in an authoritative manner without ambiguous vocabulary
- Better understand how to manage the physiological alterations of patients with catastrophic brain injury
- Constructively interface with OPOs in the management of brain dead patients and their loved ones

TARGET AUDIENCE

The target audience includes physicians (attending, hospitalists and fellows or residents in neurology, neurosurgery, critical care, trauma surgery or emergency medicine) interested in a comprehensive experience that will enhance confidence with the most contemporary approach to brain death diagnosis and management.

PROGRAM

7:30 a.m. Grainger Center for Simulation
Breakfast & Registration

8:00 Basics of Brain Death Determination
Pearls on Interacting With Families
Orientation to the Day & Simulation Center

The attendees will be divided into groups that will rotate between three stations. Faculty will observe and debrief.

1. Challenging clinical cases (with images)
2. Simulations of the patient and family encounters
 - a. Brain death determination (including apnea test) and management (on a high fidelity programmed mannequin)
 - b. Explaining brain death to the family (with trained professional actors)
3. Discussion of OPO priorities, ideal physician-OPO interactions, and catastrophic brain injury management guidelines

9:30 - 10:45 Rotation I

10:45 - 12:00 Rotation II

12:00 - 1:00 Lunch

1:00 - 2:15 Rotation III

2:15 - 3:00 Combined Group Debriefing



GRAINGER CENTER FOR SIMULATION FACULTY

Pam Aitchison, RN
Program Manager

Joanna Davidson, MD
Emergency Medicine

Clare Desmond, MD
Emergency Medicine

Sarah Donlan, MD
Emergency Medicine

Mary Gitelis, RN
Education Specialist

Steve Houg
Simulation Technician

Jared Novack, MD
Emergency Medicine

Peggy Ochoa, RN
Nurse Educator

Ernest Wang, MD
Emergency Medicine

Craig Ward
Simulation Technician

WORKSHOP COORDINATOR

Judith Maratea
Administrative Assistant
The University of Chicago Medicine
