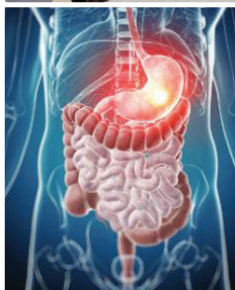


THE UNIVERSITY OF CHICAGO MEDICINE
Inflammatory Bowel Disease Center

Advanced Practice Providers and IBD Nurses: Moving from Novice to Expert in IBD Care

Saturday, April 8, 2017

FREE
CME



CONFERENCE CO-DIRECTORS

Ashley Bochenek, APN
Michele Rubin, APN

HYATT REGENCY O'HARE
9300 W Bryn Mawr Ave.
Rosemont, IL 60018

This activity has been approved for *AMA PRA Category 1 Credit™*.



THE UNIVERSITY OF
CHICAGO
MEDICINE &
BIOLOGICAL
SCIENCES

Register online at:
cme.uchicago.edu/IBDImmersion2017

DESCRIPTION

The Advanced Practice Providers and IBD Nurses: Moving from Novice to Expert in IBD Care Immersion Program will be an invaluable learning experience for practitioners seeking basic or advanced IBD knowledge. The IBD nurse specialist/physician assistant role is expanding in the areas of gastroenterology, colorectal surgery, hospital inpatient and outpatient clinic areas. Advanced Practice Nurses (APNs) and Physician Assistants (PA), as providers, improve patient access to care and play key roles in the diagnosis, treatment and ongoing management of IBD patients. This program will provide an opportunity for APNs, IBD nurses and PAs to advance their knowledge, get answers to challenging patient care questions, and observe how evidence-based practice and research are implemented in the daily care of patients. This educational opportunity will provide APNs, IBD nurses and PAs with the most up-to-date and cutting-edge information they need to provide optimal patient care.

Learning Objectives

At the conclusion of this educational activity, the participants will be able to:

- Describe the epidemiology and clinical features of inflammatory bowel disease (IBD);
- Explain the process of the diagnosis, treatment, and management of IBD;
- Cite examples of expert approaches to patient care with regard to the medical and surgical treatment of IBD;
- State how to resolve management concerns for IBD patients, including cancer risk and surveillance, ostomy care, health maintenance, pregnancy, and the psychosocial dimensions of IBD.

Please join us for what promises to be an informative and thought-provoking program.

Target Audience

The symposium has been designed for healthcare professionals interested in gastroenterology and the treatment of inflammatory bowel disease.

Accreditation and Credit Designation

The University of Chicago Pritzker School of Medicine is accredited by the Accreditation Council for Continuing Medical Education to provide continuing medical education for physicians.

The University of Chicago Pritzker School of Medicine designates this live activity for a maximum of 6.5 *AMA PRA Category 1 Credits™*. Physicians should claim only the credit commensurate with the extent of their participation in the activity.

Nurses and other healthcare professionals will receive a Certificate of Participation. For information on the applicability and acceptance of Certificates of Participation for educational activities certified for *AMA PRA Category 1 Credit™* from organizations accredited by the ACCME, please consult your professional licensing board.

Educational Grants/Commercial Support

A complete listing of commercial support received will be provided in the program materials.

Course Directors



Ashley Bochenek, APN



Michele Rubin, APN

Invited Speakers



Mary Ayers, RN



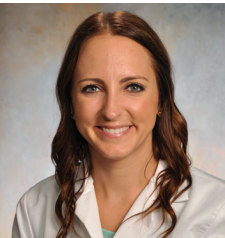
Russell D. Cohen, MD



Janice Colwell, APN



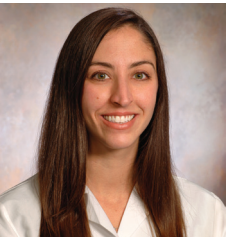
Linda Kulig, RN



Alex Masching, APN



David T. Rubin, MD



Lori Welstead, RD

Disclosure Declarations

As a provider accredited by the ACCME, The University of Chicago Pritzker School of Medicine asks everyone who is in a position to control the content of an education activity to disclose all relevant financial relationships with any commercial interest. This includes any entity producing, marketing, re-selling, or distributing health care goods or services consumed by or used on patients. The ACCME defines “relevant financial relationships” as financial relationships in any amount occurring within the past 12 months including financial relationships of a spouse or life partner that could create a conflict of interest. Mechanisms are in place to identify and resolve any potential conflict of interest prior to the start of the activity.

Additionally, The University of Chicago Pritzker School of Medicine asks Authors to identify investigational products or off-label uses of products regulated by the US Food and Drug Administration at first mention and where appropriate in the content.

AGENDA

Friday, April 8

8:00–8:10 am	Welcome <i>Michele Rubin, APN</i>
8:10–8:20	Pretest Questions <i>Ashley Bochenek, APN</i>
8:20–8:40	IBD: Who/What/Where/When and Why <i>David T. Rubin, MD</i>
8:40–9:00	Monitoring and Managing IBD <i>Russell D. Cohen MD</i>
9:00–9:15	Q/A <i>David T. Rubin, MD and Russell D. Cohen, MD</i>
9:15–9:30	Break
9:30–9:50	Diagnostic Testing in IBD <i>Russell D. Cohen, MD</i>
9:50–10:10	Medical Treatment of IBD <i>David T. Rubin, MD</i>
10:10–10:30	Q/A <i>David T. Rubin, MD and Russell D. Cohen, MD</i>
10:30–11:00	Surgical Treatment of IBD: Not Just a Last Resort <i>Michele Rubin, APN</i>
11:00–11:30	Ostomy Patient Management Issues: Expectations and Problem Solving <i>Janice Colwell, APN</i>
11:30–11:50	Q/A <i>Michele Rubin, APN and Janice Colwell, APN</i>
11:50–12:50 pm	Lunch
12:50–1:15	IBD Nurse's Role in <i>Treating to Target</i> <i>Linda Kulig RN</i>
1:15–1:35	Looking Outside the Box in IBD <i>Ashley Bochenek, APN</i>
1:35–2:00	Health Maintenance Discussions <i>Alex Masching, APN</i>
2:00–2:25	What Should We Tell Our Patients To Eat and Why? <i>Lori Welstead, RD</i>
2:25–2:50	Q/A <i>Linda Kulig RN, Lori Welstead, RD, Alex Masching, APN, and Ashley Bochenek APN</i>
2:50–3:00	Break
3:00–3:50	Case Discussion — with Audience Participation <i>Ashley Bochenek, APN, Linda Kulig, Alex Masching, APN, and Michele Rubin, APN</i>
3:50–4:00	Posttest Questions <i>Ashley Bochenek, APN</i>
4:00 pm	Closing Remarks <i>Michele Rubin, APN</i>

REGISTRATION INFORMATION

Advance registration is required. Your registration includes continental breakfast, lunch and program materials. While registration is open until the start of the meeting, we encourage early registration to enable us to provide the best possible service to participants.

How To Register *(Advance registration is required.)*

 **ONLINE** cme.uchicago.edu/IBDImmersion2017

This Program Is Open To:

- APNs, PAs and Nurses

APNs, IBD Nurses and PAs

NO FEE

Location

The symposium will take place at the Hyatt Regency O'Hare, Rosemont, IL.



Local Area Map: <https://ohare.regency.hyatt.com/en/hotel/our-hotel/map-and-directions>.

Accessibility

The University of Chicago is committed to providing equal access appropriate to need and circumstance and complies fully with the legal requirements of the Americans with Disabilities Act. If you are in need of special accommodation, please contact our office at 773-702-1056 or via email at cme@bsd.uchicago.edu.

For additional information about this activity, please contact the The University of Chicago Medicine Inflammatory Bowel Disease Center at 772-702-6073.

The University of Chicago
Center for Continuing Medical Education
5841 S. Maryland Ave., Chicago, IL 60637

Non-Profit Org.
US Postage
PAID
Lake Forest, IL
Permit No. 79

Advanced Practice Providers and IBD Nurses: Moving from Novice to Expert in IBD Care

Saturday, April 8, 2017

8:00 am - 4:00 pm

SPONSORED BY:

The University of Chicago Medicine
Inflammatory Bowel Disease Center



HYATT REGENCY O'HARE
9300 W Bryn Mawr Ave.
Rosemont, IL 60018

PLEASE POST