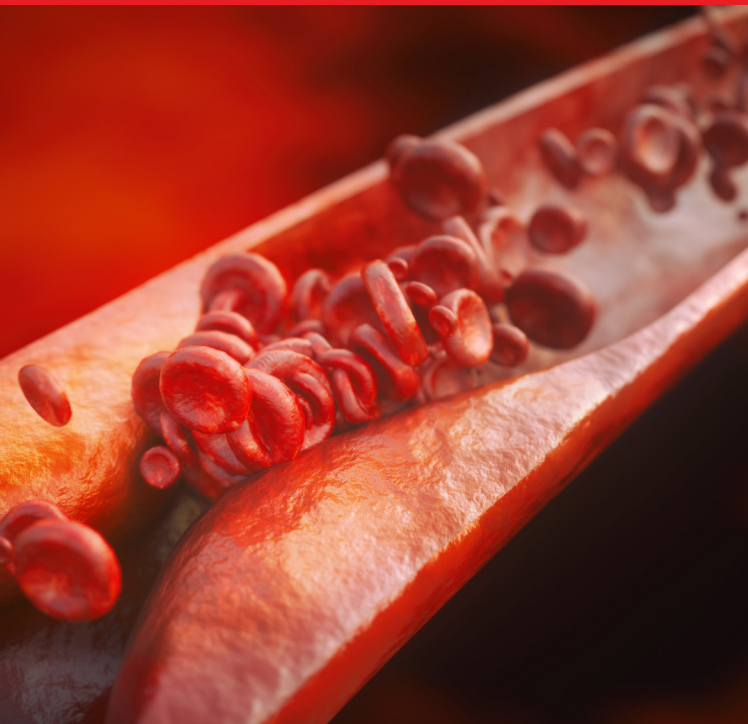


A Free, Internet-Based Activity

Treating PAD in Clinical Practice

Cases and Considerations CME / CE



MODERATOR



Joshua A. Beckman, MD
Professor of Medicine
Director of Vascular
Medicine
Vanderbilt University
Medical Center
Nashville, Tennessee

PANELIST



Michael S. Conte, MD
Professor
Chief of the Division of
Vascular and Endovascular
Surgery
Edwin J. Wylie, MD Chair,
Vascular Surgery
University of California, San
Francisco
San Francisco, California

Supported by an independent educational grant from Janssen Pharmaceuticals, Inc.

Developed through a collaboration between the University of Chicago Medicine and Medscape Education.



www.medscape.org/case/pad-cases

Treating PAD in Clinical Practice

Cases and Considerations CME / CE

TARGET AUDIENCE

This activity is intended for cardiologists, primary care physicians, and surgeons.

LEARNING OBJECTIVES

Upon completion of this activity, participants will:

Have increased knowledge regarding the

- The appropriate use of antithrombotic therapy in patients with stable peripheral arterial disease (PAD)

ACCREDITATION STATEMENT

In support of improving patient care, Medscape, LLC is jointly accredited by the Accreditation Council for Continuing Medical Education (ACCME), the Accreditation Council for Pharmacy Education (ACPE), and the American Nurses Credentialing Center (ANCC), to provide continuing education for the healthcare team..



For Physicians



The University of Chicago Pritzker School of Medicine is accredited by the Accreditation Council for Continuing Medical Education to provide continuing medical education for physicians. The University of Chicago Pritzker School of Medicine designates this enduring activity for a maximum of 0.25 *AMA PRA Category 1 Credits™*. Physicians should claim only the credit commensurate with the extent of their participation in the activity

For Nurses

Awarded 0.25 contact hour(s) of continuing nursing education for RNs and APNs; 0.25 contact hours are in the area of pharmacology.

To access this free **CME / CE** activity, please visit

www.medscape.org/case/pad-cases

