



AT THE FOREFRONT  
**UChicago**  
**Medicine**

# 2020

TUTORIAL ON

# Neoplastic Hematopathology

Director:  
**DANIEL A. ARBER, MD**

Associate Course Director:  
**ATTILIO ORAZI, MD**

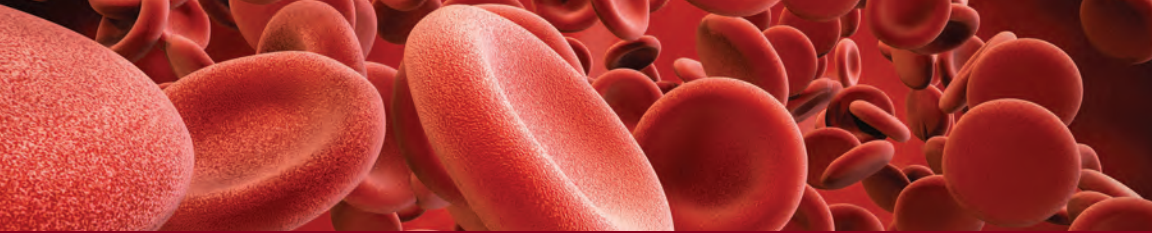
Course Directors Emeriti:  
**DANIEL M. KNOWLES, MD**  
**RICHARD D. BRUNNING, MD**  
**THE LATE, HENRY RAPPAPORT, MD**



**JANUARY**  
**20-24**  
**2020**

NAPLES GRANDE BEACH RESORT, NAPLES, FLORIDA





## Course Director

---



### **DANIEL A. ARBER, MD**

Donald West and  
Mary Elizabeth King  
Professor and Chair  
Department of  
Pathology  
University of Chicago  
Chicago, IL

## Associate Course Director

---



### **ATTILIO ORAZI, MD**

Professor and Chairman  
Department of  
Pathology  
Paul L. Foster School of  
Medicine  
Texas Tech University  
Health Sciences Center  
El Paso, TX

The Tutorial on Neoplastic Hematopathology began over 50 years ago by **Dr. Henry Rappaport** while at the **University of Chicago**. The course continues to update participants on the latest on pathology of hematologic malignancies presented by the leading faculty in the field. After 25 years of outstanding leadership from **Dr. Daniel Knowles and Weill Cornell Medicine**, the tutorial is now directed by **Dr. Daniel Arber at the University of Chicago**. Under **Dr. Arber's** leadership, the course remains committed to providing participants the most up-to-date information with the 2020 course returning to Naples, Florida.

## CONFERENCE DESCRIPTION

---

**Continuing in the tradition of 50+ years of tutorials, the 2020 course (with CME and SAM credits) is designed to update physicians on the latest advances in Neoplastic Hematopathology. It will be conducted under the direction of Dr. Daniel A. Arber at the Naples Grande Beach Resort located in Naples, Florida from January 20-24, 2020. The program will consist of lectures, case presentations and discussions designed to provide pathologists, pathologists-in-training and medical oncologists/hematologists with an in-depth discussion of diagnostic problems that arise in neoplastic hematopathology.**

## ACCREDITATION AND CREDIT DESIGNATION

### PHYSICIAN CREDIT

The University of Chicago Pritzker School of Medicine is accredited by the Accreditation Council for Continuing Medical Education to provide continuing medical education for physicians.

The University of Chicago Pritzker School of Medicine designates this live activity for a maximum of 36 *AMA PRA Category 1 Credits™*. Physicians should claim only the credit commensurate with the extent of their participation in the activity.

### AMERICAN BOARD OF PATHOLOGY MOC PART II CREDIT

Successful completion of this CME activity, which includes participation in the evaluation component, enables the participant to earn up to 36 MOC points in the American Board of Pathology's (ABPath) Maintenance of Certification (MOC) program. Participants will earn MOC points equivalent to the amount of CME credits claimed for the activity. It is the CME activity provider's responsibility to submit participant completion information to ACCME for the purpose of granting ABPath MOC credit.

### AMERICAN BOARD OF PATHOLOGY SELF-ASSESSMENT MODULE CREDIT

This live activity has been approved for Continuing Certification for 36 SAM credits by the American Board of Pathology.

### OTHER HEALTH PROFESSIONS CREDIT

Nurses and other healthcare professionals will receive a Certificate of Participation. For information on the applicability and acceptance of Certificates of Participation for educational activities certified for *AMA PRA Category 1 Credit™* from organizations accredited by the ACCME, please consult your professional licensing.

## COURSE MATERIALS

We Are Green! Hard copies of course material including flash drives, are no longer offered.

All course material containing the presenters' slide presentations, handouts, references and supplementary articles will be available online prior to the course.

## RECORDING DEVICES

The use of cell phones or video/audio recording during the lectures is strictly prohibited.

## CONFIRMATION/SEATING

Seating at the program is assigned on a first-come, first-served basis according to registration date. Early registration is recommended.

## TRANSPORTATION

Southwest Florida International Airport is 25 miles and approximately 30 minutes from the Hotel. Rental cars can be arranged at the airport, as well as the Hotel via the Concierge. Limousine service, valet and self-parking are also available via the Hotel.

## ACCOMMODATIONS

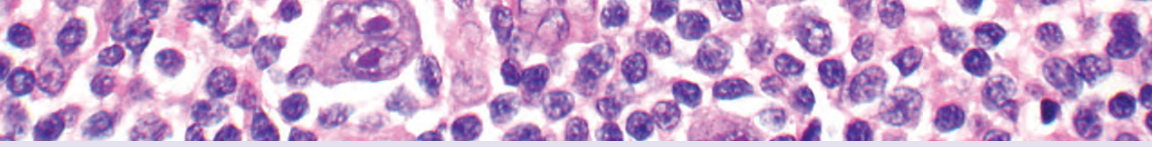
Accommodations have been reserved for Tutorial participants at Naples Grande Beach Resort. Note that a one-night deposit is required. To make reservations follow this LINK: <https://book.passkey.com/go/UCHGO20>

Participants may also call 844-210-5931 to make reservations. Advise the reservations desk that you will be attending The University of Chicago Tutorial on Neoplastic Hematopathology from January 20-24th, 2020 and use group code **GCORN20** in order to receive the University of Chicago group rate. A confirmation number will be immediately assigned. The special daily rate for this meeting is \$279/night (single/double). We strongly encourage on-line reservation bookings, as the hotel will charge a \$10.00 booking fee for all reservations made via phone. Reservations made after December 27, 2019 will be accepted on a space-available basis and rooms will not be available at the discounted group rate. Please make your reservations early!

## SCHEDULE

Registration will be: Sunday, January 19, 2020, from 4:30 to 6:30 p.m. & Monday, January 20, 2020, from 7:00 to 7:50 a.m., in the foyer outside the Grand Ballroom. The conference will run from 8:00 a.m. to 6:00 p.m. Monday through Thursday and 8:00 a.m. to 12:30 p.m. on Friday.

A continental-style breakfast will be provided each morning at 7:00 a.m. and refreshments will be served during breaks in the foyer outside the Grand Ballroom where the tutorial sessions will be held.



## Presenting Faculty

### DANIEL A. ARBER, MD

Donald West and Mary Elizabeth King Professor  
Chair, Department of Pathology  
University of Chicago | Chicago, IL

### ADAM BAGG, MD

Professor of Pathology and Laboratory  
Medicine | Director of Hematology  
Hospital of the University of Pennsylvania  
Philadelphia, PA

### MICHAEL J. BOROWITZ, MD, PhD

Professor of Pathology  
Director, Division of Hematologic Pathology  
The Johns Hopkins Hospital | Baltimore, MD

### AMY CHADBURN, MD

Professor of Pathology and Laboratory  
Medicine | Vice Chair of Clinical Support  
Services  
Weill Cornell Medicine | New York, NY

### JUDITH FERRY, MD

Director of Hematopathology  
Massachusetts General Hospital  
Professor of Pathology | Harvard Medical  
School | Boston, MA

### KATHY FOUCAR, MD

Distinguished Professor of Pathology  
University of New Mexico Health Sciences  
Center | Albuquerque, NM

### ELAINE S. JAFFE, MD

Distinguished Guest Faculty  
Bethesda, MD

### STEVEN H. KROFT, MD

Professor and Interim Chair of Pathology  
Medical College of Wisconsin | Milwaukee, WI

### ROBERT B. LORSBACH, MD, PhD

Director, Hematopathology  
Professor of Pathology | Cincinnati Children's  
Hospital Medical Center  
University of Cincinnati College of Medicine  
Cincinnati, OH

### WILLIAM G. MORICE, MD, PhD

Professor and Chair, Laboratory Medicine and  
Pathology  
President, Mayo Medical Laboratories | Mayo  
Clinic | Rochester, MN

### ATTILIO ORAZI, MD

Professor and Chairman  
Department of Pathology  
Paul L. Foster School of Medicine | Texas Tech  
University Health Sciences Center | El Paso, TX

### JONATHAN SAID, MD

Professor and Chief of Hematopathology  
Vice Chair for Research | University of California  
Los Angeles, CA

### STEVEN H. SWERDLOW, MD

Division of Hematopathology  
Department of Pathology | University of  
Pittsburgh School of Medicine | Pittsburgh, PA

### LAWRENCE M. WEISS, MD

Chief Scientific Officer  
NeoGenomics | Aliso Viejo, CA

## REGISTRATION (Online Registration Preferred)



### ONLINE

<https://cme.uchicago.edu/TNH2020>

We accept credit cards: VISA, MC & AMEX

If other means of payment are necessary,  
please contact:

Thelma Wright | Office: 773.702-0647

- The registration fee includes daily continental breakfast, coffee breaks and a reception.
- The Tutorial and online digital course material.
- Early registration is recommended.
- A \$150 administration fee will be charged for cancellation up to **January 3, 2020**.
- No refunds after **January 3, 2020**.

For additional information about registering for this activity, please contact the Center for Continuing Medical Education at 773-702-1056 or email: [cme@bsd.uchicago.edu](mailto:cme@bsd.uchicago.edu)

	Before 12/27/2019	After 12/27/2019
Practicing Physicians	\$1350	\$1450
Physicians in Training	\$675	\$725

# CONFERENCE AGENDA – 2020

---

## SUNDAY, JANUARY 19, 2020

---

4:30–6:30 p.m. **REGISTRATION**

---

## MONDAY, JANUARY 20, 2020

---

7:00 a.m. **REGISTRATION**

7:50 **Introductory Remarks** Daniel A. Arber, MD

### **Morning Session**

Chairperson: Daniel A. Arber, MD

8:00 **Approach to the Lymph Node Biopsy** Judith Ferry, MD

9:00 **Reactive Lymphadenopathies** Judith Ferry, MD

10:00 **Questions**

10:15 **BREAK**

10:30 **Immunophenotypic Analysis in the Diagnosis and Classification of Lymphoproliferative Disorders** Lawrence M. Weiss, MD

11:30 **Questions**

11:45 a.m. **LUNCH**

### **Afternoon Session**

Chairperson: Lawrence M. Weiss, MD

1:15 p.m. **Flow Cytometric Analysis in the Diagnosis and Classification of Hematologic Neoplasia** Steven Kroft, MD

2:45 **BREAK**

3:00 **Molecular Analysis in the Diagnosis and Classification of Hematologic Neoplasia** Adam Bagg, MD

4:30 **Questions**

4:45 **Case Presentations** Judith Ferry, MD & Adam Bagg, MD

6:00 **RECEPTION** (for faculty and participants only)

---

## TUESDAY, JANUARY 21, 2020

---

### **Morning Session**

Chairperson: Amy Chadburn, MD

8:00 a.m. **The Diagnosis and Classification of Non-Hodgkin Lymphomas** Steven Swerdlow, MD

8:45 **Small B Cell Lymphomas** Judith Ferry, MD

9:45 **Questions**

10:00 **BREAK**

10:15 **Diffuse Aggressive B Cell Lymphomas** Jonathan Said, MD

11:45 **Questions**

---

---

**TUESDAY, JANUARY 21, 2020 (CONTINUED)**

---

12:00 p.m.

**LUNCH**

**Afternoon Session**

Chairperson: Jonathan Said, MD

1:00 p.m.

**Extranodal and Nodal Marginal Zone Lymphoma**

Steven H. Swerdlow, MD

2:00

**Peripheral T Cell Lymphoma and Anaplastic Large Cell Lymphoma**

Elaine S. Jaffe, MD

3:30

**BREAK**

3:45

**Cutaneous Lymphomas Including Mycosis Fungoides**

Steven H. Swerdlow, MD

4:45

**Questions**

5:00–6:00

**Case Presentations** Judith Ferry, MD; Elaine Jaffe, MD;  
Jonathan Said, MD; Steven Swerdlow, MD

---

**WEDNESDAY, JANUARY 22, 2020**

---

**Morning Session**

Chairperson: Amy Chadburn, MD

8:00 a.m.

**Hodgkin Lymphoma** Lawrence Weiss, MD

9:15

**Natural Killer Cell Lymphomas and Leukemias**

William G. Morice, MD, PhD

10:00

**Questions**

10:15

**BREAK**

10:30

**Immune Deficiency – Associated Lymphoproliferative Disorders**

Amy Chadburn, MD

12:00

**Questions**

12:15 p.m.

**LUNCH**

**Afternoon Session**

Chairperson: William Morice, MD, PhD

1:45 p.m.

**Histiocytic and Dendritic Cell Proliferations** Lawrence Weiss, MD

3:00

**The Spleen** Attilio Orazi, MD

4:00

**Questions**

4:15

**BREAK**

4:30–6:00

**Case Presentations** Amy Chadburn, MD; William Morice, MD;  
Attilio Orazi, MD; Lawrence Weiss, MD

---

---

## THURSDAY, JANUARY 23, 2020

### Morning Session

Chairperson: Kathy Foucar, MD

8:00 a.m.	<b>B and T Cell Chronic Lymphoproliferative Disorders</b> Kathy Foucar, MD
9:15	<b>Plasma Cell Neoplasms</b> Robert Lorsche, MD, PhD
10:15	<b>Questions</b>
10:30	<b>BREAK</b>
10:45	<b>Acute Lymphoblastic Leukemias</b> Michael Borowitz, MD, PhD
11:45	<b>Questions</b>
12:00 p.m.	<b>LUNCH</b>

### Afternoon Session

Chairperson: Robert Lorsche, MD, PhD

1:15 p.m.	<b>Acute Myeloid Leukemia</b> Kathy Foucar, MD
2:15	<b>Myelodysplastic Syndrome</b> Attilio Orazi, MD
3:15	<b>Questions</b>
3:30	<b>BREAK</b>
3:45	<b>Myelodysplastic/Myeloproliferative Neoplasms</b> Attilio Orazi, MD
4:45	<b>Questions</b>
5:00–6:00	<b>Case Presentations</b> Michael Borowitz, MD; Kathy Foucar, MD; Robert Lorsche, MD; Attilio Orazi, MD

## FRIDAY, JANUARY 24, 2020

### Morning Session

Chairperson: Attilio Orazi, MD

8:00 a.m.	<b>Chronic Myeloid Leukemia</b> Daniel A. Arber, MD
9:00	<b><i>BCR-ABL1</i> Negative Myeloproliferative Neoplasms</b> Attilio Orazi, MD
10:00	<b>Questions</b>
10:15	<b>BREAK</b>
10:30	<b>Disorders of Mast Cells and Eosinophils</b> Daniel A. Arber, MD
11:15	<b>Questions</b>
11:30	<b>Case Presentations</b> Daniel A. Arber, MD & Attilio Orazi, MD
12:15–12:30 p.m.	<b>Concluding Remarks</b> Daniel A. Arber, MD



AT THE FOREFRONT  
**UChicago**  
**Medicine**

**2019 ATTENDEES  
HAD THIS TO SAY:**

“I found that this course is a great place to learn, share and meet people. Thank you so much for doing this.”

# 2020 TUTORIAL ON NEOPLASTIC HEMATOPATHOLOGY

January 20-24, 2020

Naples Grande Beach Resort | Naples Florida

The University of Chicago  
Center for Continuing Medical Education  
5841 S. Maryland Ave., MC 4076  
Chicago, IL 60637

NON-PROFIT ORG.  
U.S. POSTAGE  
**PAID**  
SOUTH SUBURBAN, IL  
PERMIT NO. 776