



THE UNIVERSITY OF
CHICAGO
MEDICINE &
BIOLOGICAL
SCIENCES

THE UNIVERSITY OF CHICAGO
Center for Continuing Medical Education

MAY
5-6
2017

W CHICAGO CITY CENTER
172 West Adams Street
Chicago, IL 60603

14TH ANNUAL INTERNATIONAL
ULTMANN CHICAGO
LYMPHOMA SYMPOSIUM

SYMPOSIUM CO-CHAIRS

Andrew M. Evens, DO, MSc
Tufts Medical Center

Sonali M. Smith, MD
The University of Chicago

Barbara Pro, MD
Northwestern University

Register at: <http://www.chicagolymphoma.com>

CONFERENCE DESCRIPTION

Held annually, The International Ultmann Chicago Lymphoma Symposium (IUCLS is the only conference in the Midwest that is dedicated solely to the science and clinical care of lymphoma. The conference was organized to honor the achievements of Dr. John Ultmann, a pioneer in the treatment of lymphoma, who devoted his life to the understanding of this disease. He was particularly known for his work on the staging of Hodgkin lymphoma and the utility of staging as a guide for treatment.

This conference is a certified continuing medical education (CME) activity that focuses on the biologic, diagnostic, and therapeutic aspects of Hodgkin lymphoma and non-Hodgkin lymphoma. The format of the meeting includes a combination of expert presentations, interactive case discussions, and poster/abstract presentations. The two day conference runs Friday afternoon through Saturday afternoon. The Friday session concentrates on the scientific and translational aspects of lymphoma, while the Saturday session has a clinical focus.

LEARNING OBJECTIVES

At the conclusion of this educational activity, participants will be able to:

- *Distinguish new and novel treatment options for patients with chronic lymphocytic leukemia*
- *Identify new diagnostics and precision medicine platforms that can be utilized in the prognosis and treatment of lymphoma*
- *Discuss integration of checkpoint inhibitors in the treatment of lymphoma*
- *Evaluate treatment options for newly diagnosed and relapsed/refractory mantle cell lymphoma*
- *Compare varied treatment options for diffuse large B-cell lymphoma*
- *Recognize the important prognostic factors and treatment targets in Waldenströms macroglobulinemia*
- *Describe the current treatment options for patients with Hodgkin lymphoma*

Please join us for what promises to be an informative and thought-provoking conference!

CALL FOR ABSTRACTS

Abstract submissions are now being accepted! The abstract submission deadline is **Tuesday April 25, 2017**. Additional information at chicagolymphoma.com/call-for-abstracts/.

TARGET AUDIENCE

The conference has been designed for medical hematologists/oncologists, radiation oncologists, pathologists, surgical oncologists, fellows-in-training, oncology nurses, and allied health professionals committed to the prevention, management, and elimination of lymphoma.

ACCREDITATION AND CREDIT DESIGNATION

The University of Chicago Pritzker School of Medicine is accredited by the Accreditation Council for Continuing Medical Education to provide continuing medical education for physicians.

GENERAL SESSIONS (FRIDAY and SATURDAY)

The University of Chicago Pritzker School of Medicine designates this live activity for a maximum *8.5 AMA PRA Category 1 Credits™*. Physicians should claim only the credit commensurate with the extent of their participation in the activity.

Nurses and other healthcare professionals will receive a Certificate of Participation. For information on the applicability and acceptance of Certificates of Participation for educational activities certified for *AMA PRA Category 1 Credit™* from organizations accredited by the ACCME, please consult your professional licensing board.

EDUCATIONAL GRANTS/ COMMERCIAL SUPPORT

A complete listing of commercial support received will be provided in the conference materials.

LOCATION AND ACCOMMODATIONS

The conference will be held at the W Chicago City Center, located at 172 West Adams Street.

Set in the middle of the famed Chicago Loop, W Chicago City Center is close to the Willis Tower (formerly the Sears Tower), the Art Institute of Chicago, music at Millennium Park, and the theater district. After the conference adjourns each day you are a short walk away from premium shopping, beautiful architecture, famous art, and award-winning theater.

We are pleased to offer a special discounted rate for symposium attendees. **Our special rates start at**

\$199|219* single/
double
occupancy



Reservations for The University of Chicago International Ultmann Chicago Lymphoma Symposium 2017 must be received by the hotel no later than April 27, 2017 to guarantee the reduced rate.

- **To book online:** Go to <https://www.starwoodmeeting.com/events/start.action?id=1608013384&key=135BF6AC>
- **By telephone:** Guests may call toll free at 312-332-1200 and ask for the special group rate.

TO HELP PLAN YOUR STAY IN CHICAGO VISIT: WWW.CHOOSECHICAGO.COM

Chicago is truly a city with something for everyone!

DISCLOSURE DECLARATIONS

As a provider accredited by the ACCME, The University of Chicago Pritzker School of Medicine, asks everyone who is in a position to control the content of an education activity to disclose all relevant financial relationships with any commercial interest. This includes any entity producing, marketing, re-selling, or distributing health care goods or services consumed by, or used on, patients. The ACCME defines "relevant financial relationships" as financial relationships in any amount, occurring within the past 12 months, including financial relationships of a spouse or life partner that could create a conflict of interest. Mechanisms are in place to identify and resolve any potential conflict of interest prior to the start of the activity.

Additionally, The University of Chicago Pritzker School of Medicine, requires Authors to identify investigational products or off-label uses of products regulated by the US Food and Drug Administration, at first mention and where appropriate in the content.

The University of Chicago reserves the right to cancel or postpone this conference due to unforeseen circumstances. In the unlikely event this activity must be cancelled or postponed, the registration fee will be refunded; however, The University of Chicago is not responsible for any related costs, charges, or expenses to participants, including fees assessed by airline/travel/lodging agencies.

* All rates are subject to state and city taxes. All reservations must be secured via a valid major credit card. Check-in time is 3 pm and check-out time is 12 pm.

SYMPOSIUM FACULTY

Symposium Co-Chairs

Andrew M. Evens, DO, MSc

Professor of Medicine and Chief
Division of Hematology/Oncology
Tufts University School of Medicine
Director, Tufts Cancer Center
Tufts Medical Center

Sonali M. Smith, MD

Associate Professor of Medicine
Section of Hematology/Oncology
Director, Lymphoma Program
The University of Chicago

Barbara Pro, MD

Professor of Medicine
Section of Hematology/Oncology
Northwestern University Feinberg
School of Medicine
Robert H. Lurie Comprehensive
Cancer Center of Northwestern
University

Invited Speakers

Lale Kostakoglu, MD, MPH

Professor of Radiology
Division of Nuclear Medicine,
Department of Radiology
Mount Sinai Medical Center

Leo Gordon, MD, FACP

Abby and John Friend Professor of
Oncology Research
Professor of Medicine
(Hematology/Oncology)
Northwestern Medical Center

Jennifer Brown, MD, PhD

Director, Chronic Lymphocytic
Leukemia Center
Institute Physician
Associate Professor of Medicine,
Harvard Medical School

Samir Parekh, MBBS

Associate Professor, Medicine,
Hematology and Medical Oncology
Associate Professor, Oncological
Sciences
Icahn School of Medicine at Mount
Sinai

Ash A. Alizadeh, MD, PhD

Assistant Professor of Medicine
(Oncology)
Chair, Seminar Committee, Stanford
Immunology Program
Stanford University School of
Medicine

David Maloney, MD, PhD

Clinical Research Division, Fred
Hutchinson Cancer Research
Center
Professor of Medicine, Division of
Oncology, University of Washington

Morton Coleman, MD, FACP

New York-Presbyterian Hospital
Weill Cornell Medicine

Martin Hutchings, MD, PhD

Department of Hematology
The Finsen Centre, National
Hospital
Copenhagen University Hospital

Jonathon Cohen, MD, MS

Assistant Professor, Department of
Hematology and Medical Oncology
Emory University School of
Medicine
Medical Director, Infusion Services
Winship Cancer Institute of Emory
University

Andreas Engert, MD

Chairman of the German Hodgkin
Study Group (GHSG)
Professor of Internal Medicine,
Hematology, and Oncology
University Hospital of Cologne

Jason Westin, MD

Assistant Professor
Department of Lymphoma/
Myeloma
Division of Cancer Medicine The
University of Texas
MD Anderson Cancer Center

Kara Kelly, MD

Professor of Oncology
Chair, Department of Pediatric
Oncology
Waldemar J. Kaminski Endowed
Chair of Pediatrics
Roswell Park Cancer Institute
University of Buffalo

Jorge Castillo, MD

Assistant Professor of Medicine
Harvard Medical School
Bing Center for Waldenström's
Macroglobulinemia
Dana-Farber Cancer Institute

Sonali Smith, MD

Professor of Medicine
Director, Lymphoma Program
The University of Chicago Medicine

Daniel J. Landsburg, MD

Assistant Professor of Clinical
Medicine
Division of Hematology/Oncology
Physician Leader
Outpatient Oncology Infusion
Services Physician Co-Leader
Oncology Unit Based Clinical
Leadership Abramson Cancer
Center
Hospital of the University of
Pennsylvania Perelman Center for
Advanced Medicine

Advisory Committee

Reem Karmali, MD, MS

Assistant Professor of Medicine
Northwestern University
Feinberg School of Medicine
Chicago, Illinois

Justin Kline, MD

Assistant Professor of Medicine
The University of Chicago

David Peace, MD

Professor of Medicine
Director, Hematology and Medical
Oncology Training Program
University of Illinois at Chicago

Scott Smith, MD, PhD, FACP

Professor of Medicine
Cardinal Bernardin Cancer Center
Loyola University Chicago Medical
Center

Parameswaran Venugopal, MD

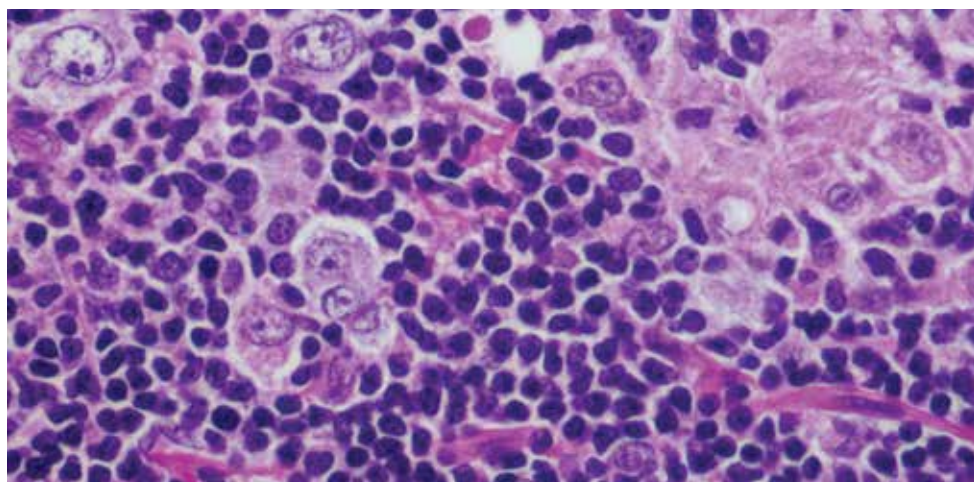
Professor of Medicine
Rush University Medical Center
Chicago, Illinois

SYMPOSIUM PROGRAM

AGENDA AND SPEAKER SELECTION SUBJECT TO CHANGE.

FRIDAY, MAY 5, 2017 EXHIBITS OPEN 1:00–6:15 pm

TIME	SESSION
12:00 pm	REGISTRATION
1:00	Welcome and Introduction
1:10	What is a Metabolic Tumor Volume and How May It Be Leveraged in Lymphoma? Lale Kostakoglu, MD, MPH
1:40	Checkpoint Inhibitors in Lymphoma: Rationale Incorporation Into Treatment Paradigms Leo Gordon, MD, FACP
2:10	Optimal Incorporation of New Targeted Agents in the Treatment of CLL Jennifer Brown, MD, PhD
2:40	REFRESHMENT BREAK
3:00	Application of Precision Medicine in DLBCL Samir Parekh, MBBS
3:30	The Impact of Biosimilars in the Treatment of Lymphoma Morton Coleman, MD, FACP
SCIENTIFIC KEYNOTE	
4:00	Current Applications and Future Innovation in Cell Based Therapy David Maloney, MD, PhD
5:00	ABSTRACT/POSTER HIGHLIGHTS AND WELCOME RECEPTION



SYMPOSIUM PROGRAM

AGENDA AND SPEAKER SELECTION SUBJECT TO CHANGE.

SATURDAY, MAY 6, 2017 EXHIBITS OPEN 7:00 am–3:00 pm


TIME	SESSION
7:00 am	REGISTRATION AND CONTINENTAL BREAKFAST
8:30	Welcome and Introduction
8:40	MRD Testing in Lymphoma Ash A. Alizadeh, MD, PhD
9:10	Should PET Response Adapted Therapy Be Utilized in the Therapy of NHL? Martin Hutchings, MD, PhD
9:40	Case Based Series: Optimum Therapy of Patients with Newly Diagnosed MCL Jonathon Cohen, MD, MS
10:10	REFRESHMENT BREAK
10:30	Case Based Series: How best to Manage Patients with Relapsed MCL Jason Westin, MD
CLINICAL KEYNOTE	
11:00	Current Status and Future Directions for Newly Diagnosed Hodgkin Lymphoma Andres Engert, MD
12:00 pm	Should Pediatric AYAs with Hodgkin Lymphoma Be Treated Differently Than Adult AYAs? Kara Kelly, MD
12:30	LUNCH
1:15	The Assessment and Treatment of Newly Diagnosed Waldenströms Macroglobulinemia Jorge Castillo, MD
1:45	How Do I Treat Limited Stage DLBCL? Sonali Smith, MD
2:15	Novel Therapeutics for the Treatment of Relapsed/ Refractory DLBCL Daniel Landsburg, MD
2:45	CLOSING REMARKS AND ADJOURNMENT

REGISTRATION INFORMATION

HOW TO REGISTER

 **ONLINE** <http://cme.uchicago.edu> **(credit card payment only)**

To pay by check, you must mail your registration with payment to:

 **MAIL** The University of Chicago
Center for Continuing Medical Education
c/o Lymphoma IUCLS 2017
5841 S. Maryland Ave., 01191, MC1137
Chicago, IL 60637

The registration fee includes symposium materials, an electronic syllabus, continental breakfast, refreshment breaks, lunch, welcome reception, and poster viewing. You may register online or via U.S. mail. **While registration is open until the start of the meeting, we encourage early registration to enable us to provide the best possible service to participants.**

	On or Before April 3	Between April 4- May 4	Onsite Registration May 5-6
Physician	\$225	\$275	\$325
Industry	\$400	\$500	\$550
Nurse/Other Health Professionals	\$125	\$150	\$175
Resident/Fellow (fax letter of verification to 773-702-1736)	\$75	\$100	\$125
			Total \$ _____

PAYMENT

Check enclosed (U.S. funds only), payable to **University of Chicago (Tax ID# 36-2177139)**

CONTACT INFORMATION

Name _____ Degree _____

Specialty _____

Organization _____

Mailing Address _____

City _____ State _____ Zip _____

Phone _____ Fax _____

Email _____

PLEASE CHECK ALL THAT APPLY

You must check this box if you do not want your mailing address shared with conference participants and exhibitors (if applicable).

Do you plan to attend the Friday Poster Viewing and Welcome Reception? Yes No

Please tell us how you found out about this activity, check all that apply:

Colleague Save the Date Brochure Internet Email

Journal Ad Previous Attendance Other _____

CANCELLATION POLICY

If you cancel your participation in this conference, your registration fee less a \$100 administrative fee will be refunded when written notification is received by April 5, 2017. **No refunds will be made after April 5, 2017.**

ACCESSIBILITY

The University of Chicago is committed to providing equal access appropriate to need and circumstances and complies fully with legal requirements of the Americans with Disabilities Act. If you are in need of special accommodation, please contact our office at 773-834-3730 or via email at cme@bsd.uchicago.edu.

For additional information about this activity, please call the Center for Continuing Medical Education at 773-702-1056.



14TH ANNUAL INTERNATIONAL

ULTMANN CHICAGO LYMPHOMA SYMPOSIUM

May 5-6, 2017

The University of Chicago

Center for Continuing Medical Education
c/o Lymphoma IUCLS 2017
5841 S. Maryland Ave., 01191, MC1137
Chicago, IL 60637

NON-PROFIT ORG.
US POSTAGE
PAID
PERMIT #126
ELGIN, IL



THE UNIVERSITY OF
CHICAGO
MEDICINE &
BIOLOGICAL
SCIENCES