

THE UNIVERSITY OF CHICAGO MEDICINE

Practical Approach to Patients with Lung Cancer

Friday, February 17, 2017



THE RITZ-CARLTON, AMELIA ISLAND
4750 Amelia Island Parkway
Amelia Island, FL 32034

COURSE DIRECTORS:

D. Kyle Hogarth, MD
Septimiu Murgu, MD

Target Audience:

Thoracic surgeons,
pulmonologists, oncologists,
radiation oncologists,
pathologists and allied
health care professionals.

This activity has been approved for *AMA PRA Category 1 Credit™*.

Register online at:
cme.uchicago.edu/LungCancer2017



THE UNIVERSITY OF
CHICAGO
MEDICINE &
BIOLOGICAL
SCIENCES

PROGRAM DESCRIPTION

The **Practical Approach to Patients with Lung Cancer** program is unique because it incorporates the following learner-centric educational elements:

Interactive, audience participation “tumor board” sessions to encourage honest, individual responses. Anonymous responses allow faculty representing pulmonology and pathology to focus on the group as well as each individual’s learning needs and apply learner-centric teaching strategies.

Authentic learning experience pertinent to minimally invasive pulmonary nodule diagnosis, mediastinal and extra-thoracic staging of lung cancer including navigational bronchoscopy, EBUS-TBNA, mediastinoscopy, video-assisted thoracic surgery, conventional and stereotactic ablative radiotherapy, small volume specimen acquisition, preparation and processing, pathology analysis, histo- and cytomorphologic diagnosis and molecular markers relevant to lung cancer.

Learning Objectives

At the conclusion of this educational activity, participants will be able to:

- Contrast the positive and negative aspects of lung cancer screening in clinical practice;
- Define the use of advanced bronchoscopic techniques, transthoracic needle aspiration, and surgery for diagnosis and molecular testing of lung cancer;
- Outline the positive and negative aspects of needle techniques and mediastinoscopy for lung cancer staging and molecular testing;
- Discuss the role of video-assisted surgery and robotic surgery for diagnosis and curative intent treatment of lung cancer;
- Analyze the evidence supporting conventional and stereotactic ablative radiotherapy for the treatment of lung cancer and oligo-metastatic disease;
- List the immunohistochemistry panels and molecular markers relevant for histologic diagnosis and targeted therapy;
- Identify the benefits and adverse effects of conventional chemotherapy, biologic agents, and immunotherapy drugs for advanced lung cancer;
- Describe novel therapies for inoperable stage IA lung cancer.

Please join us for what promises to be an informative and thought-provoking program.

Target Audience

This activity has been designed for thoracic surgeons, pulmonologists, oncologists, radiation oncologists, pathologists and other health care professionals involved in the diagnosis and management of patients suffering from lung cancer.

Accreditation and Credit Designation

The University of Chicago Pritzker School of Medicine is accredited by the Accreditation Council for Continuing Medical Education to provide continuing medical education for physicians.

The University of Chicago Pritzker School of Medicine designates this live activity for a maximum of *3.75 AMA PRA Category 1 Credits™*. Physicians should claim only the credit commensurate with the extent of their participation in the activity.

Nurses and other healthcare professionals will receive a Certificate of Participation. For information on the applicability and acceptance of certificates of participation for educational activities certified for *AMA PRA Category 1 Credit™* from organizations accredited by the ACCME, please consult your professional licensing board.

Educational Grants/Commercial Support

A complete listing of commercial support received will be provided in the conference materials.

Disclosure Declarations

As a provider accredited by the ACCME, The University of Chicago Pritzker School of Medicine asks everyone who is in a position to control the content of an education activity to disclose all relevant financial relationships with any commercial interest. This includes any entity producing, marketing, re-selling, or distributing health care goods or services consumed by or used on patients. The ACCME defines “relevant financial relationships” as financial relationships in any amount occurring within the past 12 months, including financial relationships of a spouse or life partner that could create a conflict of interest. Mechanisms are in place to identify and resolve any potential conflict of interest prior to the start of the activity.

Additionally, The University of Chicago Pritzker School of Medicine requires Authors to identify investigational products or off-label uses of products regulated by the US Food and Drug Administration at first mention and where appropriate in the content.

The University of Chicago reserves the right to cancel or postpone this conference due to unforeseen circumstances. In the unlikely event this activity must be cancelled or postponed, the registration fee will be refunded; however, The University of Chicago is not responsible for any related costs, charges, or expenses to participants, including fees assessed by airline/travel/lodging agencies.

FACULTY

Course Directors

D. Kyle Hogarth, MD Associate Professor of Medicine The University of Chicago Medicine	Septimiu Murgu, MD, FCCP Associate Professor of Medicine The University of Chicago Medicine
---	--

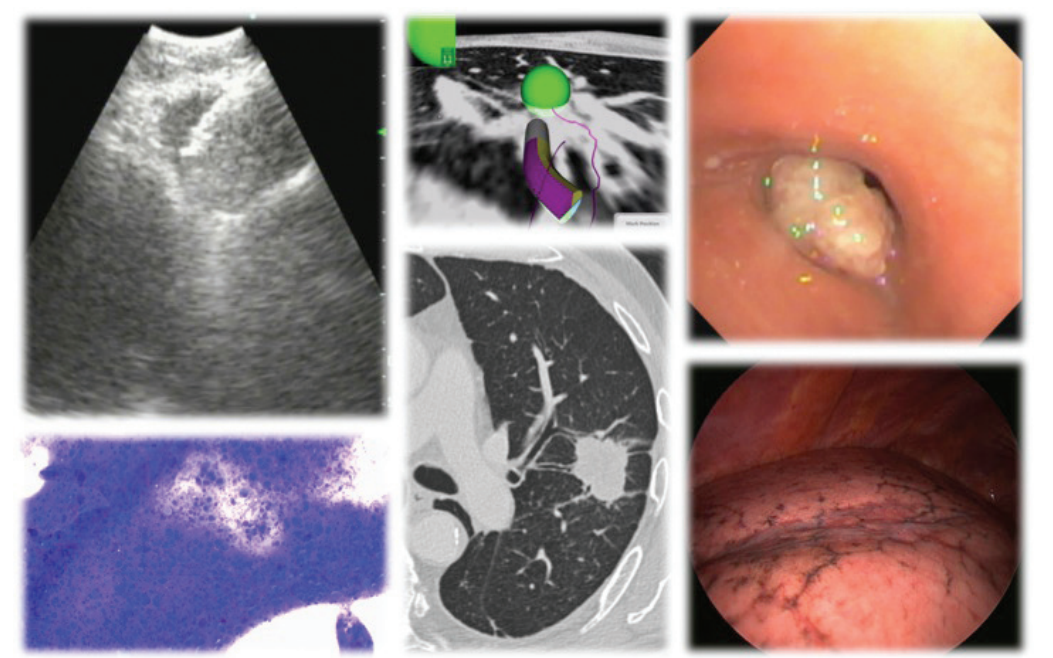
University of Chicago Faculty

Laura Frye, MD Assistant Professor of Medicine The University of Chicago Medicine	Kimberly Gottlieb, APN-BC Nurse Practitioner The University of Chicago Medicine	Jeffrey Mueller, DO Assistant Professor of Pathology The University of Chicago Medicine
--	--	--

AGENDA

Friday, February 17

7:30–8:00 am	Breakfast, Registration and Introduction
8:00–8:15	Pre-test <i>All participants</i>
8:15–8:45	Practical Approach to Lung Cancer Screening: Interactive Q&A <i>Kimberly Gottlieb; Kyle Hogarth</i>
8:45–9:15	Practical Approach to a Patient with a Pulmonary Nodule: Interactive Q&A <i>Kyle Hogarth, Tim Murgu, Laura Frye, Jeffrey Mueller, Kimberly Gottlieb</i>
9:15–10:00	Practical Approach to a Patient with a Lung Mass and Intrathoracic Adenopathy: Interactive Q&A <i>Kyle Hogarth, Tim Murgu, Laura Frye, Jeffrey Mueller, Kimberly Gottlieb</i>
10:00-10:15	Break
10:15–10:45	Practical Approach to a Patient with Lung Cancer and Disease Progression: Interactive Q&A <i>Kyle Hogarth, Tim Murgu, Laura Frye, Jeffrey Mueller, Kimberly Gottlieb</i>
10:45–11:15	Practical Approach to a Patient with Inoperable Early Stage Lung Cancer: Interactive Q&A <i>Kyle Hogarth, Tim Murgu, Laura Frye, Jeffrey Mueller, Kimberly Gottlieb</i>
11:15–11:45	Do It/Don't Do It! Interactive Session and Summit Wrap-up <i>Participants and Faculty</i>
11:45–12:00 pm	Post-test



REGISTRATION INFORMATION

There is a registration fee for this activity. Your registration includes continental breakfast, lunch and conference materials. While registration is open until the start of the meeting, we encourage early registration to enable us to provide the best possible service to participants.

How To Register

 **ONLINE** cme.uchicago.edu/LungCancer2017

This Conference Is Open To:

- Physicians
- Other Health Professionals
- Residents/Fellows

Physicians	\$350
Other Health Professionals	\$100
Residents/Fellows	\$50

Location

The program will take place at The Ritz-Carlton, Amelia Island, Amelia Island, FL.



Local Area Map: ritzcarlton.com/en/hotels/florida/amelia-island/hotel-overview/directions

Accessibility

The University of Chicago is committed to providing equal access appropriate to need and circumstance and complies fully with the legal requirements of the Americans with Disabilities Act. If you are in need of special accommodation, please contact our office at 773-702-1056 or via email at cme@bsd.uchicago.edu.

For additional information about this activity, please contact the Center for Continuing Medical Education at 773-702-1056.

The University of Chicago
Center for Continuing Medical Education
5841 S. Maryland Ave., MC1137, Chicago, IL 60637

Non Profit Org.
U.S. Postage
PAID
Skokie, IL
Permit No. 245

Practical Approach to Patients with Lung Cancer

Friday, February 17, 2017

THE RITZ-CARLTON, AMELIA ISLAND
4750 Amelia Island Parkway
Amelia Island, FL 32034



THE UNIVERSITY OF
CHICAGO
MEDICINE &
BIOLOGICAL
SCIENCES



PLEASE POST