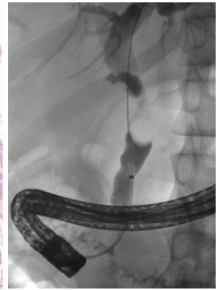
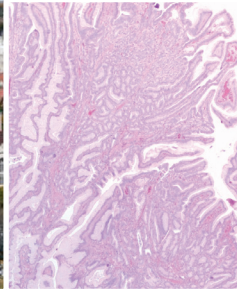


THE UNIVERSITY OF CHICAGO MEDICINE
Department of Medicine and the Digestive Diseases Center

Best of the Annual Conferences in Digestive Diseases

Saturday, June 11, 2016

7:30 am–5:00 pm



CONFERENCE CO-DIRECTORS

Sonia Kupfer, MD
Konstantin Umanskiy, MD

THE WESTIN O'HARE

6100 N River Rd
Rosemont, IL 60018

DIGESTIVE DISEASES CENTER CO-DIRECTORS

Neil Hyman, MD
David T. Rubin, MD

This activity has been approved for *AMA PRA Category 1 Credit™*.

Register online at:
cme.uchicago.edu/DigestiveDiseases2016



THE UNIVERSITY OF
CHICAGO
MEDICINE &
BIOLOGICAL
SCIENCES

CONFERENCE DESCRIPTION

Best of the Annual Conferences in Digestive Diseases is a one day educational activity that will focus on providing participants with the most up to date review of this past year's most important findings in the management of GI diseases; including endoscopic therapy, surgical intervention, screening, and the management of complicated GI diseases via a multi-disciplinary approach.

Learning Objectives

At the conclusion of this educational activity, participants will be able to:

- Evaluate up-to-date evidence-based medical practices in the diagnosis and treatment of gastrointestinal and liver diseases.
- Recognize the role of emerging technologies for medical and surgical management of gastrointestinal diseases.
- Apply new knowledge to challenging cases in gastroenterology, hepatology and nutrition.

Please join us for what promises to be an informative and thought-provoking conference.

Target Audience

This activity has been planned for Gastroenterologists, Surgeons, Nurses, Nurse Practitioners, Physician Assistants and Residents/Fellows.

Accreditation and Credit Designation

The University of Chicago Pritzker School of Medicine is accredited by the Accreditation Council for Continuing Medical Education to provide continuing medical education for physicians.

The University of Chicago Pritzker School of Medicine designates this live activity for a maximum of 7 *AMA PRA Category 1 Credits™*. Physicians should claim only the credit commensurate with the extent of their participation in the activity.

Nurses and other healthcare professionals will receive a Certificate of Participation. For information on the applicability and acceptance of certificates of participation for educational activities certified for *AMA PRA Category 1 Credit™* from organizations accredited by the ACCME, please consult your professional licensing board.

Educational Grants/Commercial Support

A complete listing of commercial support received will be provided in the conference materials.

Disclosure Declarations

As a provider accredited by the ACCME, The University of Chicago Pritzker School of Medicine, requires everyone who is in a position to control the content of an education activity to disclose all relevant financial relationships with any commercial interest. This includes any entity producing, marketing, re-selling, or distributing health care goods or services consumed by, or used on, patients. The ACCME defines "relevant financial relationships" as financial relationships in any amount, occurring within the past 12 months, including financial relationships of a spouse or life partner that could create a conflict of interest. Mechanisms are in place to identify and resolve any potential conflict of interest prior to the start of the activity.

Additionally, The University of Chicago Pritzker School of Medicine, requires Authors to identify investigational products or off-label uses of products regulated by the US Food and Drug Administration, at first mention and where appropriate in the content.

The University of Chicago reserves the right to cancel or postpone this conference due to unforeseen circumstances. In the unlikely event this activity must be cancelled or postponed, the registration fee will be refunded; however, The University of Chicago is not responsible for any related costs, charges, or expenses to participants, including fees assessed by airline/travel/lodging agencies.

Course Directors

Sonia Kupfer, MD

Assistant Professor of Medicine

Director, Gastrointestinal Cancer Risk and Prevention Clinic

Konstantin Umanskiy, MD

Assistant Professor of Surgery

Program Director, Colon and Rectal Surgery Residency Program

Invited Speaker

John I. Allen, MD, MBA

Clinical Chief of Digestive Diseases

Yale University School of Medicine

University of Chicago Faculty

Lisa Cannon, MD

Clinical Associate, Colorectal Surgery

Russell D. Cohen, MD

Professor of Medicine

Director, Inflammatory Bowel Disease Center

Co-Director, Advanced IBD Fellowship

Sushila Dalal, MD

Assistant Professor of Medicine

Andres Gelrud, MD

Associate Professor of Medicine

Mustafa Hussain, MD

Assistant Professor of Surgery

Neil Hyman, MD

Professor of Surgery

Chief of Colorectal Surgery

Co-Director, Digestive Diseases Center

Edwin K. McDonald, MD

Assistant Professor of Medicine

Mitchell C. Posner, MD

Professor and Chief of General Surgery

Joel Pekow, MD

Assistant Professor of Medicine

David T. Rubin, MD

Professor of Medicine

Chief, Section of Gastroenterology, Hepatology & Nutrition

Co-Director, Digestive Diseases Center

Carol E. Semrad, MD

Professor of Medicine

Director, Clinical Nutrition Fellowship Program

Neil Sengupta, MD

Assistant Professor of Medicine

Jessica Stoll, MS, CGC

Genetic Counselor

Helen S. Te, MD

Associate Professor of Medicine

Konstantin Umanskiy, MD

Associate Professor of Surgery

Program Director, Colon and Rectal Surgery Residency Program

Irving Waxman, MD

Professor of Medicine, Surgery and The University of Chicago Cancer Research Center

Director, Center for Endoscopic Research & Therapeutics

Faculty Disclosure

It is the policy of The University of Chicago to ensure balance, independence, objectivity, and scientific rigor in all its individually sponsored or jointly sponsored educational activities. Individuals who are in a position to control the content of this educational activity are required to disclose all relevant financial relationships with any commercial interest related to the subject matter of the educational activity. Mechanisms to ensure that presentations are free from commercial bias are in place. Faculty will also disclose any off-label and/or investigational use of pharmaceuticals or instruments discussed in their presentation. Full disclosure of this information will be published in the activity materials.

CONFERENCE AGENDA

Saturday, June 11

7:30-8:00 am	Breakfast & Registration
7:55-8:00	Welcome <i>Sonia Kuper, Conference Co-Director</i>
8:00-8:45	KEYNOTE ADDRESS Value-based Care in Gastroenterology , <i>John Allen</i>
Session I	Pancreatitis and Pancreatic Cancer , <i>Andres Gelrud, moderator</i>
8:45-9:00	Updates in Pancreatitis , <i>Andres Gelrud</i>
9:00-9:15	Role of Endoscopy in Pancreatic Cancer , <i>Irving Waxman</i>
9:15-9:30	Surgical Advances in Pancreatic Cancer , <i>Mitchell Posner</i>
9:30-9:55	Panel Discussion
9:55-10:15	Break
10:15-10:45	CHALLENGING CASES IN HEPATOLOGY The Patient with Hepatitis C and Cirrhosis , <i>Helen Te</i>
10:45-10:55	Break
Session II	Colorectal Polyps and Cancer , <i>Konstantin Umanskiy, moderator</i>
10:55-11:10	Updates in Colorectal Cancer Screening , <i>Sonia Kupfer</i>
11:10-11:20	Hereditary Colorectal Cancer Syndromes , <i>Jessica Stoll</i>
11:20-11:35	Robotic Surgery for Rectal Cancer , <i>Lisa Cannon</i>
11:35-12:00	Panel Discussion
12:00-1:00 pm	Lunch with Experts
1:00-1:30	CHALLENGING CASES IN GI The Patient with Hematemesis on Anti-Coagulant or Anti-Platelet Therapy , <i>Neil Sengupta</i>
1:30-1:40	Break
Session III	Small Bowel, Nutrition & Obesity , <i>Carol Semrad, moderator</i>
1:40-1:55	Celiac Disease in 2016 , <i>Carol Semrad</i>
1:55-2:10	Medical and Endoscopic Management of Obesity , <i>Edwin McDonald</i>
2:10-2:25	Advances In Surgical Management of Obesity , <i>Mustafa Hussain</i>
2:25-2:50	Panel Discussion
2:50-3:00	Break
Session IV	Inflammatory Bowel Diseases , <i>David Rubin, moderator</i>
3:00-3:15	Update of IBD Therapy in 2016 , <i>Russell Cohen</i>
3:15-3:30	Maintenance Considerations in the IBD Patient , <i>Sushila Dalal</i>
3:30-4:00	CHALLENGING CASES IN IBD The Patient with IBD and C. Difficile , <i>Joel Pekow, Neil Hyman</i>
4:00-4:15	Break
4:15-4:30	Endpoints and Management Goals in IBD , <i>David Rubin</i>
4:30-4:55	Panel Discussion
4:55-5:00	Wrap-Up

REGISTRATION INFORMATION

There is a registration fee for this activity. Your registration includes continental breakfast, lunch and conference materials. While registration is open until the start of the meeting, we encourage early registration to enable us to provide the best possible service to participants.

How To Register

 **ONLINE** <https://cme.uchicago.edu/DigestiveDiseases2016>


This Conference Is Open To:

- Physicians
- Nurses and other Health Professionals
- Residents/Fellows

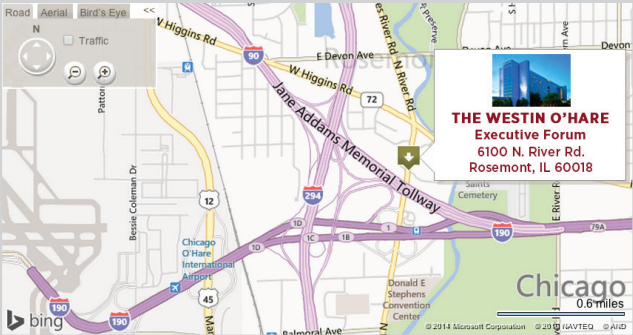
Physician	\$50
Residents, Nurses and other Health Professionals	\$25

Conference Location

The conference will take place at The Westin O’Hare, Rosemont, IL.



The Westin O’Hare
Executive Forum
6100 N River Rd
Rosemont, IL 60018
Phone: (847) 698-6000



Local Area Map: <http://www.starwoodhotels.com/westin/property/area/map.html?propertyID=1032>

Accessibility

The University of Chicago is committed to providing equal access appropriate to need and circumstance and complies fully with the legal requirements of the Americans with Disabilities Act. If you are in need of special accommodation, please contact our office at 773-702-1056 or via email at cme@bsd.uchicago.edu.

For additional information about this activity, please contact the Center for Continuing Medical Education at 773-702-1056.

The University of Chicago
Center for Continuing Medical Education
5841 S. Maryland Ave., Chicago, IL 60637

NON-PROFIT
ORGANIZATION
U.S. POSTAGE
PAID
DLC

Best of the Annual Conferences in Digestive Diseases

Saturday, June 11, 2016

7:30 am - 5:00 pm

SPONSORED BY:

The University of Chicago Medicine, Department of Medicine
and the Digestive Diseases Center

THE WESTIN O'HARE

6100 N River Rd
Rosemont, IL 60018



PLEASE POST