

NOVEMBER 13-15, 2015

FEATURING LIVE CASES & HANDS-ON SESSION

# 20TH ANNUAL ENDOSCOPIC ULTRASONOGRAPHY LIVE 2015

Center for Endoscopic Research & Therapeutics (CERT)



## A Collaboration between The University of Chicago Medicine and Massachusetts General Hospital

THE UNIVERSITY OF CHICAGO MEDICINE  
CENTER FOR CARE AND DISCOVERY  
5700 South Maryland, 7th Floor  
Chicago, IL 60637

### COURSE DIRECTORS:

Irving Waxman, MD, FASGE

William R. Brugge, MD

Uzma D. Siddiqui, MD, FASGE

**Target Audience:** This activity has been planned for Gastroenterologists, Endoscopists, Endosonographers, Surgeons, Oncologists, Nurses and GI fellows committed to the advancement of endoscopy.

This course is endorsed by the American Society for Gastrointestinal Endoscopy



Course highlights include two full days of live EUS procedures, interactive debates, video quizzes, and lectures. There will also be an optional half-day hands-on lab where the expert faculty will teach important EUS skills and techniques.

Please Join Us in Chicago for the EUS Event of the Year!

Register online at: [cme.uchicago.edu/courses](http://cme.uchicago.edu/courses)



THE UNIVERSITY OF  
**CHICAGO**  
MEDICINE &  
BIOLOGICAL  
SCIENCES

## CONFERENCE FACULTY

### INTERNATIONAL FACULTY

**Fauze Maluf-Filho, MD, PhD, FASGE**

Director of the Endoscopy  
Unit of the Cancer Institute of  
São Paulo - ICESP  
Professor of the Department  
of Gastroenterology of the University  
of São Paulo  
Associate Editor for Gastrointestinal  
Endoscopy

**Julio Iglesias-Garcia MD, PhD**

Head of Endoscopy Unit  
Department of Gastroenterology  
and Hepatology  
University Hospital of Santiago  
de Compostela. Spain

**Alberto Larghi MD, PhD**

Director of the Endoscopic  
Ultrasound program  
Digestive Endoscopy Unit  
Catholic University  
Rome, Italy

**Peter Vilmann MD, DSc, HC, FASGE**

Professor of Endoscopy  
GastroUnit, dept. of Surgery  
Copenhagen University Hospital  
Herlev, Denmark

**Jacques Deviere, MD, PhD**

Professor of Medicine  
Chairman of the Department  
of Gastroenterology,  
Hepatopancreatology  
and Digestive Oncology  
Erasmus Hospital  
Brussels, Belgium

### INVITED FACULTY

**Kai Matthes, MD, PhD**

Clinical Assistant Professor  
Harvard Medical School  
Director, Developmental Endoscopy  
Beth Israel Deaconess Medical Center  
Boston, MA

**Jason N. Rogart, MD, FASGE**

Director of Interventional  
Gastroenterology and  
Therapeutic Endoscopy  
Capital Health Center for  
Digestive Health  
Clinical Assistant Professor  
of Medicine  
Rutgers-Robert Wood Johnson  
Medical School

**Brenna Casey, MD, FASGE**

Interventional Gastroenterology  
Director of Endoscopic Training  
Massachusetts General Hospital  
Harvard Medical School

**Vanessa M Shami MD**

Associate Professor of  
Internal Medicine  
Director of Endosonography  
University of Virginia Digestive  
Health System

**Michael Jack Levy, MD**

Professor of Medicine  
Mayo Clinic, Departments  
Gastroenterology and Hepatology  
Rochester, MN

**Shyam Varadarajulu, MD**

Medical Director  
Center for Interventional Endoscopy  
Florida Hospital, Orlando, FL

### UNIVERSITY OF CHICAGO FACULTY

**Tatjana Antic, MD**

Assistant Professor of Pathology  
Department of Pathology

**D. Kyle Hogarth, MD, FCCP**

Associate Professor of Medicine  
Director - Bronchoscopy and  
Interventional Pulmonary  
Section of Pulmonary & Critical Care  
Department of Medicine

**Andres Gelrud, MD, MMSc**

Associate Professor of Medicine  
Director, Pancreatic Diseases Center  
and Advanced Endoscopy  
Department of Medicine

**Mitchell C. Posner, MD**

Thomas D. Jones Professor of Surgery  
Chief, Section of General Surgery  
Chief, Surgical Oncology  
Medical Director, Clinical  
Cancer Programs, Department of Surgery

**Brian Funaki, MD**

Section Chief, Vascular and  
Interventional Radiology  
Department of Radiology

**Vani Konda, MD, FASGE**

Assistant Professor of Medicine  
Director, Endoscopic Research and  
Educational Programs  
Department of Medicine

### COURSE DIRECTORS

**Irving Waxman, MD, FASGE**

Sara and Harold Lincoln Thompson  
Professor of Medicine, Surgery and  
Director of The Center for Endoscopic  
Research and Therapeutics (CERT)

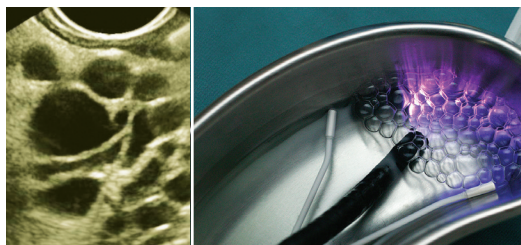
**Uzma D. Siddiqui, MD, FASGE**

Associate Professor of Medicine  
Associate Director of the Center for  
Endoscopic Research and  
Therapeutics (CERT)  
Director of Endoscopic Ultrasound  
(EUS) and Advanced Endoscopy  
Training

**William R. Brugge, MD**

Director, Pancreas Biliary Center  
Mass. General Hospital  
Professor of Medicine  
Harvard Medical School

## CONFERENCE DESCRIPTION



Endoscopic ultrasound (EUS) has become a widespread endoscopic technique in the diagnosis, staging, and tissue acquisition of gastrointestinal malignancies. High resolution imaging of the pancreas has also been a major strength of EUS. This course will offer gastroenterologists, endoscopists, surgeons, and nurses an opportunity

to review the indications and techniques used for EUS, fine needle aspiration (FNA), and injection therapy. A series of lectures, live case demonstrations, and hands-on tutorials will be conducted by an expert international EUS faculty.

### LEARNING OBJECTIVES

At the conclusion of this educational activity, participants will be able to:

- *Discuss the most recent advances in EUS technology and equipment;*
- *Describe the role of EUS in the diagnosis, staging, and management of gastrointestinal malignancies;*
- *Identify the applications for the radial, sector-scanning echoendoscope and the curved linear-array echoendoscope, including EUS-guided fine needle aspiration and EUS probes;*
- *Explain how EUS is utilized to evaluate pancreatic diseases including malignancy, cystic neoplasms, and chronic pancreatitis.*

Please join us for what promises to be an informative and thought-provoking conference!

### TARGET AUDIENCE

This activity has been planned for Gastroenterologists, Endoscopists, Endosonographers, Surgeons, Oncologists, Nurses and GI fellows committed to the advancement of endoscopy.

### ACCREDITATION AND CREDIT DESIGNATION

The University of Chicago Pritzker School of Medicine is accredited by the Accreditation Council for Continuing Medical Education to provide continuing medical education for physicians.

#### GENERAL SESSIONS (FRIDAY AND SATURDAY)

The University of Chicago Pritzker School of Medicine designates this live activity for a maximum 16.25 *AMA PRA Category 1 Credit(s)*<sup>™</sup>. Physicians should claim only the credit commensurate with the extent of their participation in the activity.

#### OPTIONAL HANDS ON WORKSHOP (SUNDAY)

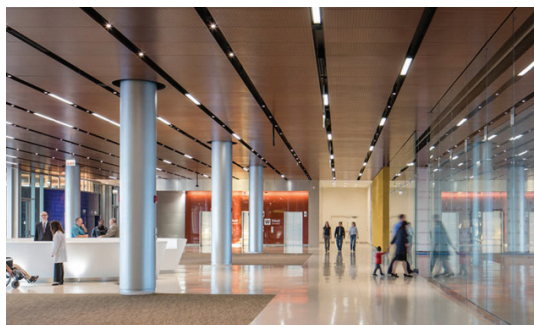
The University of Chicago Pritzker School of Medicine designates this live activity for a maximum 5 *AMA PRA Category 1 Credit(s)*<sup>™</sup>. Physicians should claim only the credit commensurate with the extent of their participation in the activity.

Nurses and other healthcare professionals will receive a Certificate of Participation. For information on the applicability and acceptance of certificates of participation for educational activities certified for *AMA PRA Category 1 Credit*<sup>™</sup> from organizations accredited by the ACCME, please consult your professional licensing board.

### FACULTY DISCLOSURE

It is the policy of the University of Chicago to ensure balance, independence, objectivity, and scientific rigor in all its individually sponsored or jointly sponsored educational activities. Individuals who are in a position to control the content of this educational activity are required to disclose all relevant financial relationships with any commercial interest related to the subject matter of the educational activity. Mechanisms to ensure that presentations are free from commercial bias are in place. Faculty will also disclose any off-label and/or investigational use of pharmaceuticals or instruments discussed in their presentation. Full disclosure of this information will be published in the activity materials.

## LOCATION AND ACCOMMODATIONS



The conference will take place at The University of Chicago Medicine Center for Care and Discovery. Complimentary valet parking will be provided.

### **University of Chicago Medicine Center for Care and Discovery**

5700 South Maryland, 7th Floor  
Chicago, IL 60637

<http://careanddiscovery.uchospitals.edu/>

## HOTEL/ACCOMMODATIONS/TRANSPORTATION

We have reserved a block of rooms the Fairmont Chicago, Millennium Park hotel, where contemporary elegance blends seamlessly with a classic approach to luxury service. **We will provide shuttle bus service to/from hotel and conference location.**

### **Fairmont Chicago Millennium Park**

200 North Columbus Drive

Chicago, IL 60601

Phone: 800-526-2008 or via our Passkey: [resweb.passkey.com/go/euslive2015](http://resweb.passkey.com/go/euslive2015)

Please make your reservations directly with the Fairmont Chicago Millennium Park, and state that you are part of the University of Chicago group to receive this rate. We urge you to make your reservation early as rooms will sell out in Chicago.

### **Room Rates: \$189 Single or Double Rate**

Check-in: 3:00 pm

Check-out: 12:00 pm

Rates do not include applicable state and local taxes, currently 16.4%. **The “cut-off date” for reserving rooms is 5:00 pm (central time) on October 15, 2015.** Reservations received after the cut-off date will be subject to prevailing rates and availability.

For directions and additional information about The Fairmont Chicago, please visit:

[www.fairmont.com/chicago/](http://www.fairmont.com/chicago/)

**Chicago** is truly a city with something for everyone!

To help plan your stay in Chicago visit:

[www.choosechicago.com](http://www.choosechicago.com)

*The University of Chicago reserves the right to cancel or postpone this conference due to unforeseen circumstances. In the unlikely event this activity must be cancelled or postponed, the registration fee will be refunded. However, The University of Chicago is not responsible for any related costs, charges, or expenses to participants, including fees assessed by airline/travel/lodging agencies.*



## EDUCATIONAL GRANTS/COMMERCIAL SUPPORT

A complete listing of commercial support received will be provided in the conference materials.

CONFERENCE AGENDA

FRIDAY, NOVEMBER 13

7:00 AM	REGISTRATION & CONTINENTAL BREAKFAST
7:30	Welcome, <i>Irving Waxman, William Brugge, Uzma Siddiqui</i> Opening Remarks, <i>Mitchell Posner</i>
	Session I: EUS Basics Moderators: <i>Jacques Deviere, Brenna Casey, Fauze Maluf-Filho</i>
7:40	The EUS Revolution, <i>Irving Waxman</i>
8:00	The 2015 EUS tool box and hardware, <i>Brenna Casey</i>
8:15	Approach to Radial EUS, <i>Fauze Maluf-Filho</i>
8:30	Approach to Linear EUS, <i>William Brugge</i>
8:45	Approach to Fine Needle Aspiration (FNA), <i>Peter Vilmann</i>
9:00	Live Transmission
10:00	Questions and Answers
	Session II: Upper GI Section Moderators: <i>Michael Levy, Peter Vilmann</i>
10:15	BREAK
10:30	The Role of EUS in Thoracic Cancer Staging, <i>Peter Vilmann</i>
10:50	EBUS: What the GI Needs to Know, <i>Kyle D. Hogarth</i>
11:10	The Role of EUS in Gastric Cancer Staging, <i>Jason Rogart</i>
11:30	Live Transmission
12:30 PM	LUNCH
	Session III: Pancreas Moderators: <i>Mitchell Posner, Julio Iglesias-Garcia, Andres Gelrud</i>
1:30	The Role of EUS in Pancreatico-biliary Cancer, <i>Julio Iglesias-Garcia</i>
1:50	Cystic Lesions of the Pancreas, <i>William Brugge</i>
2:10	Views from Surgical Oncology, <i>Mitchell Posner</i>
2:30	Live Transmission
3:30	BREAK
3:40	The Role of EUS in Idiopathic and Chronic Pancreatitis, <i>Michael Levy</i>
4:00	EUS Video Quiz, <i>Brenna Casey</i>
4:30	RECEPTION
5:10 PM	ADJOURN

SATURDAY, NOVEMBER 14

7:30 AM	CONTINENTAL BREAKFAST
	Session IV: Luminal Moderators: <i>Vanessa Shami, Andres Gelrud</i>
8:00	Approach to Submucosal Tumors, <i>Fauze Maluf-Filho</i>

## CONFERENCE AGENDA

8:20	The Role of EUS in Rectal Cancer Staging, <i>Vanessa Shami</i>
8:40	Quality and Complications in EUS, <i>Jason Rogart</i>
9:00	Live Transmission
<b>10:00</b>	<b>BREAK</b>
	Session VI: Next Steps in Diagnosis Moderators: <i>Peter Vilmann, Jason Rogart</i>
10:10	Optical Coherence Tomography, <i>Vani Konda</i>
10:30	Molecular Analysis with FNA, <i>Alberto Larghi</i>
10:50	Contrast Agents and Elastography, <i>Julio Iglesias-Garcia</i>
11:10	Needle Based Confocal Laser Endomicroscopy, <i>Uzma Siddiqui</i>
11:30	Live Transmission
<b>12:30 PM</b>	<b>LUNCH</b>
	Session VII: Therapeutic EUS Moderators: <i>Brian Funaki, Shyam Varadarajulu, Alberto Larghi</i>
1:30	EUS-guided Biliary drainage, <i>Jacques Deviere</i>
1:50	EUS-guided Drainage of Pancreatic Fluid Collections, <i>Shyam Varadarajulu</i>
2:10	Debate: Endosonographic Biliary and Gallbladder Drainage, Ready for Prime Time? <i>Andres Gelrud, Brian Funaki, Shyam Varadarajulu</i>
2:30	Live Transmission
3:30	EUS Guided Neurolysis, <i>Vanessa Shami</i>
<b>3:50</b>	<b>BREAK</b>
4:00	EUS-guided Anti-tumor Therapy, <i>Alberto Larghi</i>
4:20	Hemostasis by EUS, <i>Michael Levy</i>
4:40	Therapeutic EUS in 2015, <i>Jacques Deviere</i>
<b>5:00</b>	<b>CLOSING COMMENTS</b>
<b>5:10 PM</b>	<b>ADJOURN</b>

## SUNDAY, NOVEMBER 15 (OPTIONAL HANDS-ON SESSION)


<b>7:30 AM</b>	<b>BREAKFAST</b>
8:00	Best of DDW, <i>Jason Rogart</i>
8:30	Best of UEGW, <i>Jacques Deviere</i>
9:00	Hands-On Rotations, <i>All Faculty</i>
11:00	EUS Questions and Cases <b>LUNCH</b>
12:00	Hands-On Rotations, <i>All Faculty</i>
<b>2:00 PM</b>	<b>ADJOURN</b>

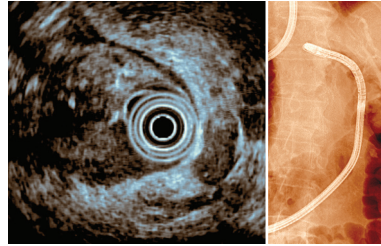
# REGISTRATION

## HOW TO REGISTER

 **ONLINE** [cme.uchicago.edu](http://cme.uchicago.edu) (**credit card payment only**)

To pay by check, you must mail your registration with payment to:

 **MAIL** The University of Chicago  
Center for Continuing Medical Education  
c/o EUS Live 2015  
950 East 61st Street, Suite 101  
Chicago, IL 60637



The registration fee includes conference materials, an electronic syllabus, continental breakfast, refreshment breaks, lunch, and welcome reception. **Optional Sunday, Nov 15th Hands-On Skills Assessment and Training Session is extra.** You may register online or US mail. **While registration is open until the start of the meeting, we encourage early registration to enable us to provide the best possible service to participants.**

	On or Before Oct 1	After Oct 1
Physician (Friday & Saturday General Sessions)	<b>\$750</b>	<b>\$825</b>
Nurse/PA/Allied Health Professionals (Friday & Saturday General Sessions)	<b>\$450</b>	<b>\$525</b>
Resident/Fellow ( <i>fax letter of verification to 773-702-1736</i> ) (Friday & Saturday General Sessions)	<b>\$350</b>	<b>\$425</b>
Industry (Friday & Saturday General Sessions)	<b>\$475</b>	<b>\$550</b>
<b>OPTIONAL Hands-On Session: Sunday, Nov 15, 2015 (SPACE IS LIMITED)</b>	<b>\$250</b>	<b>\$325</b>

**Payment Total \$** \_\_\_\_\_

## PAYMENT

☐ Check enclosed (U.S. funds only), payable to **The University of Chicago (Tax ID#36-2177139)**

## CONTACT INFORMATION

Name \_\_\_\_\_ Degree \_\_\_\_\_  
Specialty \_\_\_\_\_  
Organization \_\_\_\_\_  
Mailing Address \_\_\_\_\_  
City \_\_\_\_\_ State \_\_\_\_\_ Zip \_\_\_\_\_  
Phone \_\_\_\_\_ Fax \_\_\_\_\_  
Email \_\_\_\_\_

## PLEASE CHECK ALL THAT APPLY

☐ You must check this box if you do not want your mailing address shared with conference participants and/or exhibitors (if applicable).

Do you plan to attend the Friday Welcome Reception? ☐ Yes ☐ No

Please tell us how you found out about this activity, check all that apply:

☐ Colleague ☐ Save the Date ☐ Brochure ☐ Internet ☐ Email  
☐ Journal Ad ☐ Previous Attendance ☐ Other \_\_\_\_\_

## CANCELLATION POLICY

If you cancel your participation in this conference, your registration fee, less a \$100.00 administrative fee, will be refunded when written notification is received by October 1, 2015. **No refunds will be issued after October 1, 2015.**

## ACCESSIBILITY

The University of Chicago is committed to providing equal access appropriate to need and circumstance and complies fully with the legal requirements of the Americans with Disabilities Act. If you are in need of special accommodation, please contact our office at 773-702-1056 or via email at [cme@bsd.uchicago.edu](mailto:cme@bsd.uchicago.edu).

For additional information about this activity, please call the Center for Continuing Medical Education at 773.702.1056.

The University of Chicago  
Center for Continuing Medical Education  
950 East 61st Street, Chicago, IL 60637

**NOVEMBER 13-15, 2015**

# **20TH ANNUAL ENDOSCOPIC ULTRASONOGRAPHY LIVE 2015**

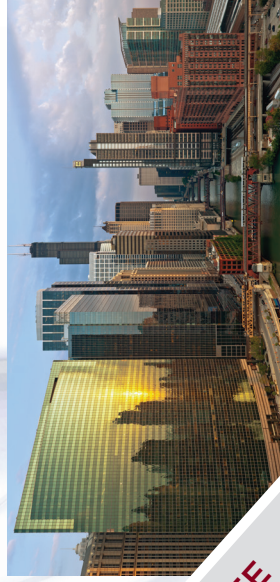
**FEATURING LIVE CASES  
& HANDS-ON SESSION**

**Center for Endoscopic Research  
& Therapeutics (CERT)**

THE UNIVERSITY OF CHICAGO MEDICINE  
CENTER FOR CARE AND DISCOVERY  
5700 South Maryland, 7th Floor  
Chicago, IL 60637



**AND SAVE THE DATE**  
For our 4th Annual  
Endoscopy Course  
APRIL 2016



NON-PROFIT  
ORGANIZATION  
U.S. POSTAGE  
PAID  
DLC

PLEASE POST